

Eurowindow
Pioneer. Engineer. Engage.



TABLE OF CONTENTS

4	Introduction
6	Vision - Mission - Core Values
8	Achievements
12	Factories
14	Milestones
18	New Generation Smart Doors
30	Glass Products
34	Aluminum Doors and Large Aluminum-Glass Facades
52	uPVC Doors and Curtain Wall
68	Wooden Doors
76	Ventilated Aluminum Roller Shutters
78	Automatic Sliding Doors
80	Shower Glass Partitions and Hydraulic Doors
82	Outstanding Projects
102	Distribution Network
103	Showroom and Representative Offices



INTRODUCTION

In 2002, Eurowindow pioneered the introduction of modern European-standard uPVC doors to the Vietnamese market, sparking a revolution the door industry and ushering in a “new era” for Vietnamese homes. Over more than two decades, Eurowindow has continuously reinforced its PIONEER position by embracing cutting-edge technologies and advancing its new generation of smart doors equipped with 4.0 technology.

Eurowindow products can be founded in hundreds of thousands of projects across Vietnam and abroad, from residential buildings, villas, offices, government headquarters, banks, hotels, schools, and

hospitals, etc. all contributing to helping to ENGINEER a modern urban landscape. The company has also played a role in key national projects such as the National Assembly Building, Government Headquarters, and international airports, etc.

ENGAGE: Eurowindow supports customers from the consulting and design phase to construction, maintenance, and product warranties. We also collaborate with global partners under a philosophy of mutual support and synergy to enhance long-term value. The company aims to provide unique experiences and contribute to building a prosperous society for all.



VISION

To reaffirm its position as Vietnam's leading provider of comprehensive solutions for green building materials.



MISSION

For Customers: Pioneer in delivering the best solutions, enhancing quality of life, and modernizing urban architecture.

For Shareholders and Employees: Operate efficiently and generating long-term value for shareholders and employees.

For Society: Align the company's interests with society benefits and contribute to environmental sustainability.



CORE VALUES

QUALITY:

Delivering top-tier products and services that meet and exceed customer expectations.

PROFESSIONALISM:

A team of highly skilled professionals, upholding the highest standards in both conduct and expertise.

EFFICIENCY:

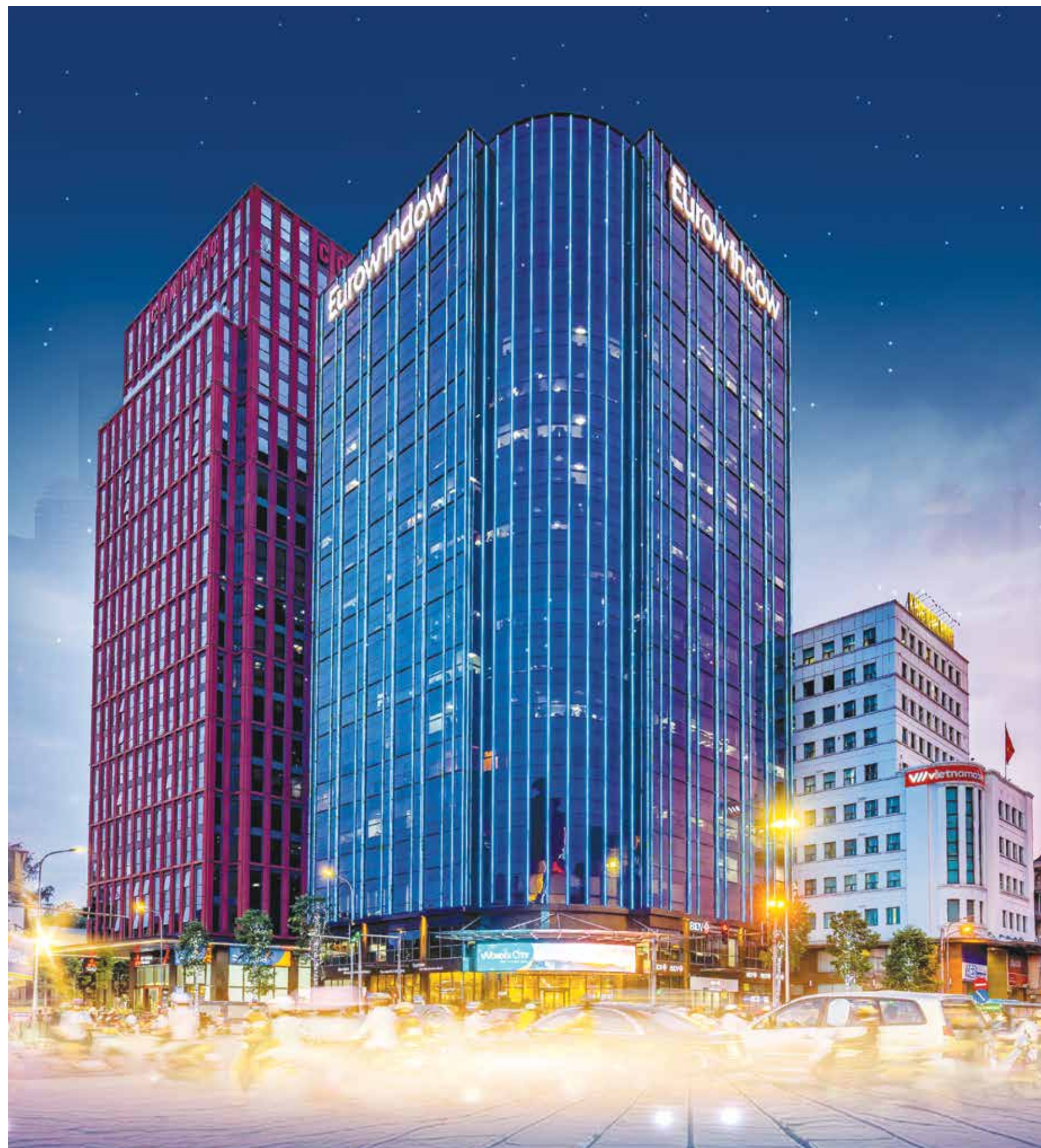
Optimizing time, resources and workforce productivity in every endeavor, aiming to increase value for customers and the company.

DEDICATION:

Committed to our work and customers, with a proactive, creative, and passionate approach to achieving collective goals.

SUSTAINABILITY:

Prioritizing long-term objectives and sustainable growth, while balancing human resources, corporate culture, social responsibility, and environmental stewardship.





ACHIEVEMENTS

With outstanding accomplishments in production and business activities, Eurowindow has been awarded with numerous prestigious awards, including: Second-Class Labor Order by the President of Vietnam. Certificate of Merit from the Prime Minister. Recognition as National Brand for consecutive years. Vietnam Quality Gold Award from the Ministry of Science, Technology, and Environment. Top 10 Sao Vang Dat Viet Award by the Vietnam Young Entrepreneurs Association. Top 10 National Famous Brands. Recognition as a Distinguished Building Material Product. Vietnam High-Quality Goods Award. Designation as a Key Industrial Product of Hanoi. International Brand Award honored by the Asia-Pacific Brand Foundation (APBF)

Eurowindow's uPVC door and window products are certified to meet International quality standards by KOEMMERLING Group (Germany). The safety glass and double glazing glass are certified to meet quality standards by Saint Gobain Glass (France). As well as, Eurowindow's aluminum coating products are being globally certified by PPG (USA). Furthermore, Eurowindow has been accredited with certifications for its quality management system in compliance with ISO 9001:2000 standard and its environmental management system according to the international ISO 14001:2004 standard.





Mr. Nguyen Canh Hong, General Director of Eurowindow, along with the company's leadership team, celebrated receiving the Second-Class Labor Order.



Mr. Nguyen Canh Hong, General Director of Eurowindow, accepted the title of Vietnam National Brand in 2024.



Eurowindow Joint Stock Company was honored with the Cup and Certification for Key Industrial Products of Hanoi in 2023.



Mr. Nguyen Canh Hong, General Director of Eurowindow, received the Top 10 Sao Vang Dat Viet Award.



Eurowindow Joint Stock Company was recognized among the Top 500 Largest Enterprises in Vietnam in 2020.



Eurowindow also received a Certificate of Merit and Cup recognizing it as one of the Top 10 Most Reputable Building Material Companies in 2023.



FACTORIES

Eurowindow operates 05 manufacturing plants and 02 glass processing centers located in Hanoi, Da Nang, and Binh Duong. All facilities are equipped with state-of-the-art production lines, fully imported from leading global suppliers from Germany, Italy, Finland, and Spain.

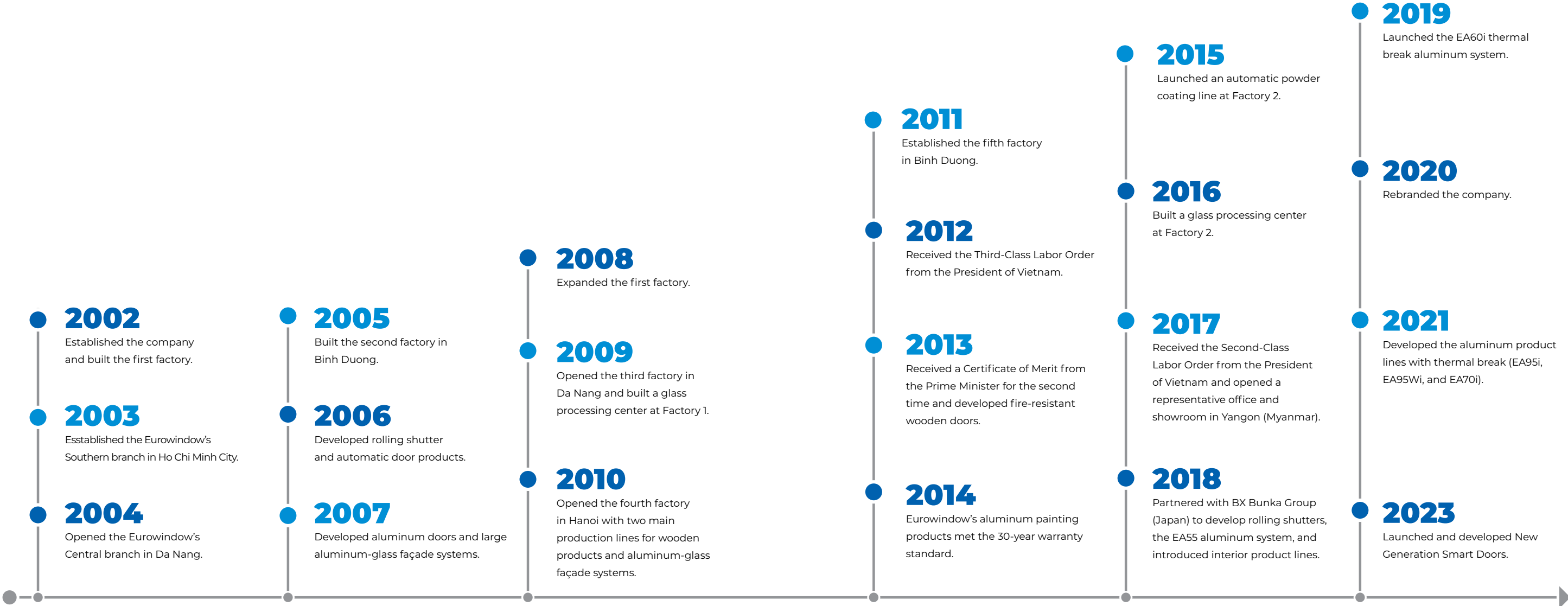
The company has established an extensive distribution network across Vietnam, including 01 headquarters, two branches, five factories, nearly 40 showrooms, and hundreds of agencies, distributors, and representative offices. Eurowindow also operates a representative office in Myanmar.

By expanding both in breadth and depth and pioneering advanced technologies, Eurowindow is consistently meet large orders with fast production timelines.





MILESTONES







NEW-GENERATION SMART DOORS

Eurowindow's new-generation smart doors feature elegant designs and integrate cutting-edge 4.0 technology. These doors offer advanced functionalities such as voice control, facial recognition, weather sensors, and remote operation, enhancing safety and convenience contribute to creating a safe and comfortable living space for users.



AUTOMATIC FLOOR-HINGED DOORS

In addition to being installed in building lobbies, these doors are ideal for office entrances and as partitions between kitchens and other spaces, ensuring both convenience in movement and privacy while preventing odors from spreading.

The doors are equipped with a three-sensor system: Motion sensor: Automatically opens the door when it detects human approaching. Obstacle sensor: Halts door movement when it detects objects or people 10–15 cm away on the opposite side. Force sensor: Stops or reverses door movement automatically upon collision.

The product allows flexible adjustment of the opening direction, supports multiple control methods, and includes a backup power supply to ensure uninterrupted operation.

Advantages

- Efficient Traffic Flow: convenient and fast movement with two-way automatic bi-directional opening – closing system.
- High Durability: Strong load-bearing capability due to the profile structure up to 2mm, combined with reinforced ribs.
- Flexible Operation: Offers three opening methods — automatic activation when detecting nearby movement, remote control, and manual operation with a button.
- Space Optimization: Allows adjustable opening angles of up to 90 degrees, maximizing space usage.
- Enhanced Safety: High safety standards, with the option to integrate with the building's central fire alarm system.

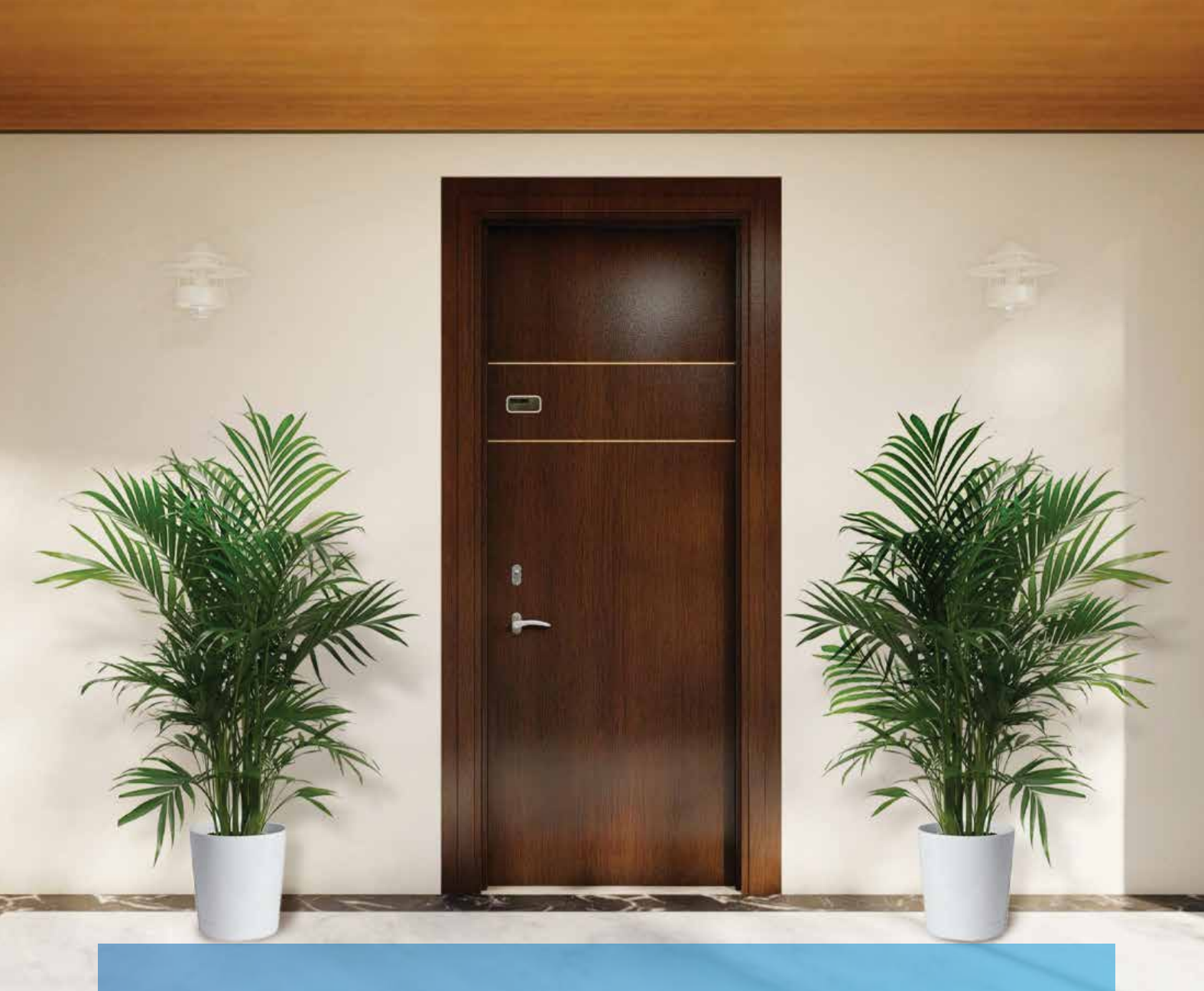


AUTOMATIC VERTICAL FOLD SLIDING DOORS

This product combines two functions: serves as a glass partition and can be folded vertically upward to transform into a canopy. When opened, the lower panel is positioned perpendicular to the vertical plane, while the upper panel folds to form a small awning. This design offers an open, airy view, enhances natural ventilation, and offers partial rain protection. The design can be customized with classic European style.

Advantages

- Convenient Operation: Supports three modes of operation—remote control, button press, and manual opening.
- Aesthetic Versatility: With a wide range of paint colors (such as black, white, gray, and coffee, etc.) suitable for various architectural styles.
- Integrated Weather Sensor: Automatically closes when it detects rain, ensuring convenience and protection.
- Smooth and Efficient Performance: Equipped with a quiet, stable motor operation, ensuring energy efficiency.



FACIAL RECOGNITION DOOR

Facial recognition door utilizes Liveness Check technology, allowing keyless operation and remote control. This product features automatic image capture and Storage, enabling access to historical time logs and sends notifications to homeowners when an unfamiliar person is repeatedly detected in the recognition area, helping to prevent unauthorized intrusions.

Advantages

- **Fast and Accurate Recognition:** Identifies faces within 1 second and activates remote unlocking in 3-4 seconds.
- **Reliable Performance:** Stable operation thanks to an external power source (unlike other products on the market that use a shared battery for both lock and camera).
- **Elegant Design:** Offers elegant and sophisticated aesthetics, compatible with various types of door handles.
- **Flexible Operation:** Integrates multiple unlocking methods—direct facial recognition via camera, remote unlocking via app, or traditional key access.
- **High Security:** Provides robust protection against facial spoofing attempts, including printed photos, videos, or 3D masks.
- **User-Friendly Interface:** Simple and intuitive, with language settings available in Vietnamese and English.



VOICE CONTROLLED WINDOW

For the first time in the Vietnamese market, Eurowindow introduces automatic window system with multiple control methods, including voice control without manual operation. The system features four opening styles: inward turn, outward turn, tilt, and top-hung.

Advantages

- **Versatile Operation:** Supports voice control, remote control, mobile app, and manual button operation.
- **Superior Soundproofing:** Reduces noise by up to 40 dB (for inward turn, outward turn, and tilt opening designs), ensuring a quiet environment.
- **Enhanced Safety:** Equipped with weather sensors for automatic closure when it rains.
- **Sleek Aesthetics:** Features a refined design with concealed chains and levers, available in four profile colors and two accessory finishes (black and silver).



AUTOMATIC SLIDING WINDOW

The automatic sliding window system features sashes that open parallel to the frame, allowing adjustable openings and the ability to stop at any position during operation. This is an efficient ventilation, heat dissipation, and moisture extraction solution, especially for spaces with limited outdoor space.

Advantages

- Refined Aesthetics: Designed without exposed chains or arm mechanisms, available in four profile colors with two accessory color options (black and silver).
- Flexible Operation: Enables smooth opening and closing through multiple control methods—button press, remote control, or mobile app.
- Exceptional comfort and safety, compatible with weather sensor integration.



AUTOMATIC VERTICAL SLIDING PARTITION

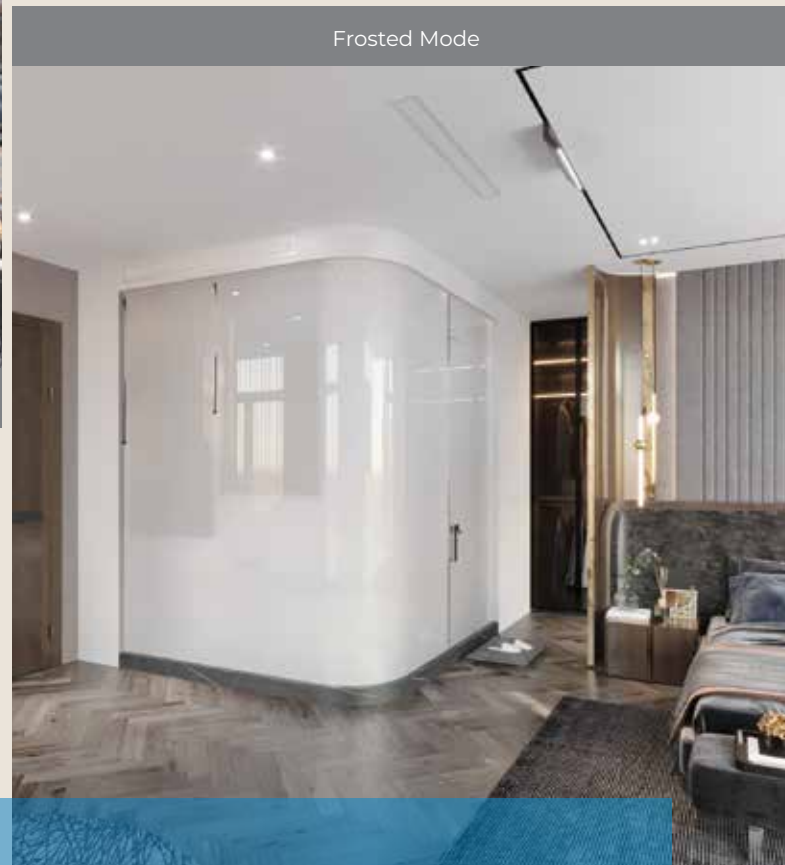
Made from high-grade aluminum profiles, stainless steel accessories, insulated glass panels, and double EPDM seals, the automatic vertical sliding partition system with horizontal mullion design, slim frame is a modern solution for high-rise architecture. It easily converts open balconies into enclosed spaces, or vice versa.

Advantages

- Optimized Ventilation and Lighting: Optimizes wind flow, natural light, and offers expansive, unobstructed views.
- Superior Strength and Safety: Equipped with a multi-point locking system and finger trap prevention design.
- Elegant Aesthetics: With a smooth aluminum frame surface (with hidden joints beneath the profile cover) and recessed handles integrated into the frame, maintaining a sleek appearance.
- Convenient Maintenance: Allows easy cleaning of the exterior surface from inside the building without the need for ladders or ropes.
- Durable and Efficient: Offers high durability with excellent soundproofing and thermal insulation.



Clear Mode



Frosted Mode



ELECTROCHROMIC GLASS

This glass is composed of two layers of glass with an electrochromic film in between. Its operation relies on the alignment of liquid crystal molecules:

Transparent Mode: When powered on, liquid crystal molecules align to allow light to pass through, making the film transparent.

Frosted Mode: When powered off, the molecules randomly orient, scattering light and turning the film opaque, providing privacy without the need for traditional curtains or decals.

It is suitable for applications such as bathroom walls, bedrooms, office spaces, skylights, garden partitions, and outdoor swimming pool areas.

Advantages

- **Convenient Operation:** Offers multiple control options, including switches, remotes, and compatibility with smart home apps.
- **Elegant Aesthetics:** Available in various colors such as light green, smoke gray, transparent white, and other custom colors based on customer requirements.
- **High Durability:** Capable of up to nearly 14 million on/off cycles under standard conditions.
- **Health and Safety Benefits:** Blocks UV and infrared radiation, protecting health and reducing heat penetration.
- **Versatility:** In the opaque mode, it can be used with specialized projection screen for advertising or decorative purposes.

AUTOMATIC BLINDS IN INSULATED GLASS

Smart Insulated Glass Blinds are designed within an inert gas (argon gas) between two layers of glass. It can be controlled via a smartphone app, remote, or switch, offering three operational modes: raise, lower, or tilt the slats to adjust light levels based on user preferences. This advanced solution enhances energy efficiency, privacy, and modern interior spaces.

Advantages

- **Reduces Greenhouse Effect:** Effectively blocks greenhouse effect and blocks ultraviolet rays with a UV resistance rating of 35, safeguarding health and protecting interior furnishings and electronics.
- **Energy Efficiency:** Airtight, insulated, and energy-efficient, saving up to 40% in electricity costs.
- **Low Maintenance:** Dust-proof design minimizes cleaning and maintenance efforts.
- **Anti-Condensation Features:** Built-in desiccant beads prevent condensation, mold, and rust within the glass unit.
- **Noise Reduction:** Collision-resistant and anti-vibration design, reducing noise levels.
- **Precision Engineering:** Slats with accurately perforated holes ensure smooth operation, reducing cord breakage and preventing misalignment.
- **Stylish Versatility:** Available in a variety of colors to suit diverse interior styles and design needs.



Techno Park Building
Da Ton, Gia Lam, Hanoi



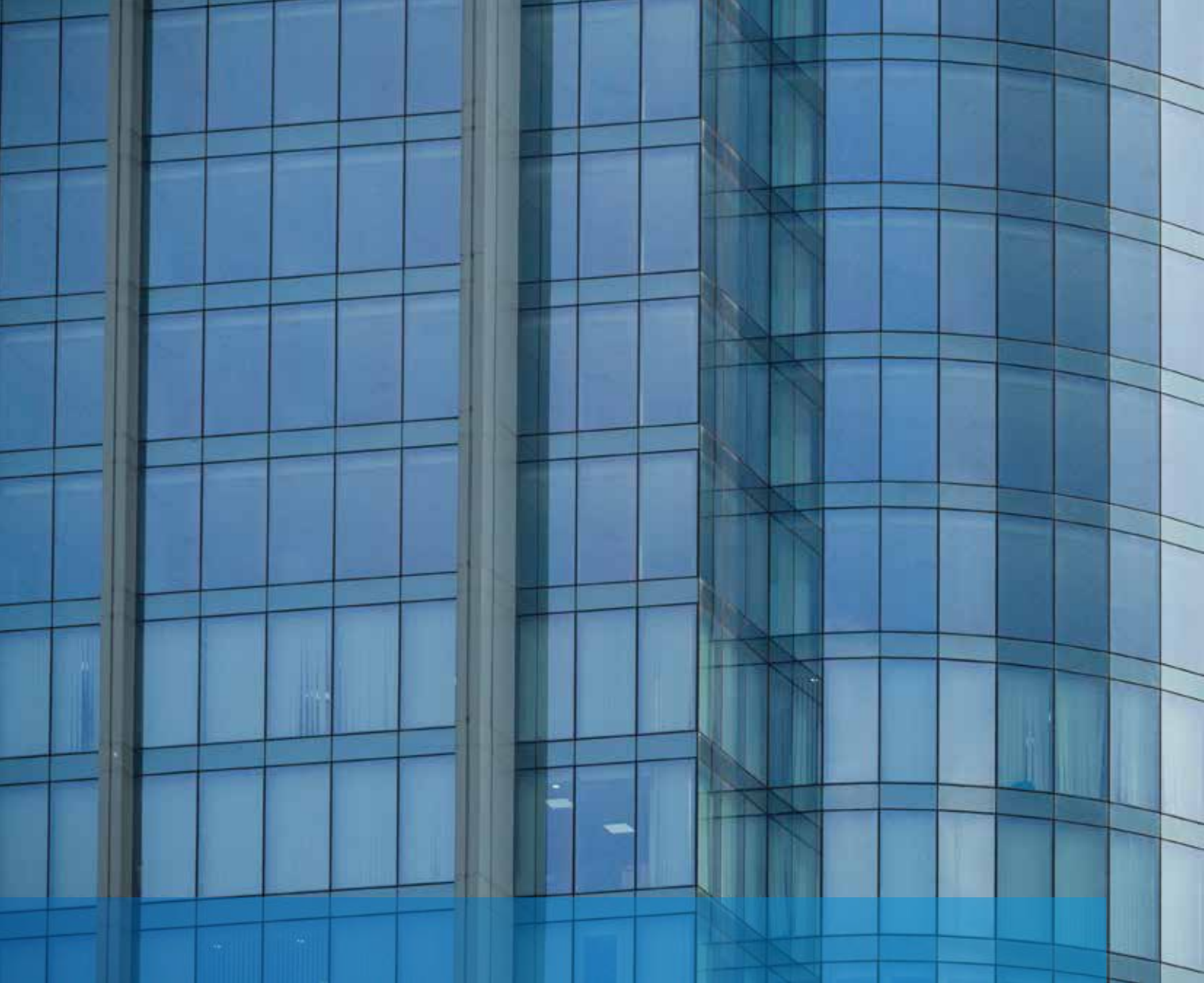
SKYLIGHT WINDOW WITH WEATHER SENSOR

Skylight window offers an innovative solution for natural lighting, ventilation, smoke exhaust, and heat dissipation in various buildings. These skylights feature multiple control options, including remote control and wall-mounted buttons, ensuring ease of use.

The weather sensor system automatically triggers the window to close when it detects rain or strong winds. In case of a fire, smoke detector signals trigger the skylights to automatically open, allowing toxic gases to escape, reducing risks, and ensuring user safety. These skylights comply with fire safety standards and come with a dedicated control unit. The product is designed for surface installation on the roof and features a 3-layer EPDM seal system, providing excellent waterproofing. Additionally, the product has a double-glazed box, enhancing soundproofing, thermal insulation, and impact resistance for added safety.

Advantages

- Superior Waterproofing: Features a specialized triple-layer drainage system to prevent water ingress.
- Easy Operation: Offers versatile operating methods, including wall-mounted button and remote control.
- Enhanced Safety: Built-in weather sensor system ensures automatic operation during adverse conditions, enhancing protection and convenience.



GLASS PRODUCTS

Eurowindow has invested in two of the most modern and synchronized glass processing centers in Vietnam, equipped with advanced European-imported machinery, including:

- Flat glass tempering furnace system.
- Safety glass lamination production lines.
- Insulated glass unit (IGU) production lines.
- Quality control equipment to detect and eliminate defective tempered glass (Heat-Soak-Test).

Eurowindow can process tempered and heat-strengthened glass, including hard-coated, soft-coated, reflective glass, and more, with thicknesses ranging from 4mm to 19mm and a maximum size up to 2800 x 6000 mm.

Eurowindow's tempered and heat-strengthened glass products meet international standards, including EN 1863, ANSI Z97.1-2004, ECE R 43, and EN 12150-1.

In particular, Eurowindow employs the most advanced technology to temper Super Soft Coating Low-E glass with a low emissivity coefficient of 0.01. This technology significantly minimizes solar radiation, minimizes heat absorption, and slows heat transmission, ensuring high thermal efficiency and reduced energy consumption while maintaining optimal brightness in indoor spaces.

TEMPERED GLASS AND HEAT-STRENGTHENED GLASS PRODUCTS

TEMPERED GLASS

Tempered Glass: Tempered glass is heated to approximately 700°C then rapidly cooled with air to create surface tension, enhancing its load-bearing capacity, impact resistance, and resistance to thermal stress breakage.

Advantages

- Provide up to 4-5 times stronger than regular glass of the same thickness and size.
- When shattered, it breaks into small, rounded fragments rather than sharp edges like regular glass, reducing the risk of injury.
- Highly resistance to thermal shock, endure sudden temperature changes between the surface and core of over 200°C, whereas regular glass only tolerate differential of up to 50°C.

HEAT-STRENGTHENED GLASS

Heat-strengthened glass undergoes a similar heat treatment process as tempered glass but with different heating and cooling method, which provides moderate strength without the complete tempering process.

Advantages

- Offers 2-3 times harder than regular glass of the same thickness and size
- When broken, it cracks in long, wavy patterns from the point of impact towards the frame without shattering into large, dangerous pieces like regular glass or disintegrating immediately as fully tempered glass does.
- Additionally, it retains better flexibility, ensuring stability for high-rise buildings and exposed to wind pressure.

APPLICATIONS

With high strength and resilience, tempered and heat-strengthened glass offer excellent impact resistance, vibration damping, thermal stability, and shock resistance. These properties make them an ideal solution for construction projects that prioritize safety and durability. These glass types are widely used in both construction and interior applications, including large glass facades, curtain walls, partitions, hydraulic doors, stair railings, doors, windows, vehicle windows, display cabinets, shower enclosures, and shelving.

INSULATED GLASS UNITS (IGU) & LARGE FORMAT INSULATED GLASS UNITS

The standard insulated glass units (IGU) are widely used for doors, windows, while large-format IGUs are commonly used in high-rise buildings. Eurowindow is one of the few companies in Vietnam capable of manufacturing large-format IGUs with dimensions of 2.7m x 3.5m. In addition to ensuring safety, Eurowindow's insulated glass units also provide an aesthetically pleasing and modern look for buildings, offering the following superior features:

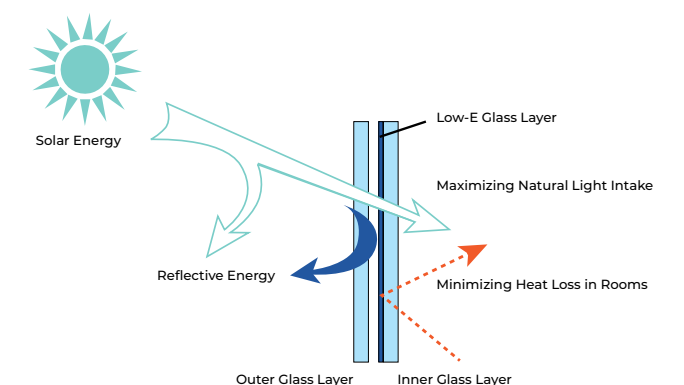
Soundproofing & Thermal Insulation: Eurowindow's insulated glass is constructed with a gap filled with Argon gas and coated with Low-E technology. This configuration significantly reduces heat transmission, maintaining indoor comfort and energy efficiency.

Prevention of Condensation: With regular glass, the temperature difference between the outside and inside of a room can lead to condensation. However, Eurowindow's IGUs are specially designed with moisture-absorbing particles and an inert gas filling, preventing condensation on the glass when there are significant temperature differences.

Safety: Featuring a tempered exterior and safety laminated glass, Eurowindow's IGUs are durable, impact-resistant, and secure, meeting stringent safety standards for a variety of projects.

Eurowindow's safety laminated glass and double-glazing products have obtained certification from leading global

glass manufacturers, including Saint-Gobain Glass (France), Guardian (USA), AGC (Belgium), and have been awarded the Kitemark certification by the British Standards Institution (BSI), meeting the BSEN1279-2:2002 standard.



Function of Low-E Glass in Double-Glazing Glass

SAFETY GLASS

Safety glass is specially constructed with single glass layers washed with deionized water, laminated with PVB film (Polyvinyl Butyral – a specialized plastic material), and processed at a high temperature of 130°C to create a strong bond and transparency.

Depending on the purpose and user requirements, laminated safety glass can be produced using various types of PVB film (colored, fabric-laminated, decorative patterns) and 2 or 3 layers of different glass types (clear glass, colored glass, reflective glass, tempered glass, heat-strengthened glass, and insulating glass).

Eurowindow's laminated safety glass offers superior features compared to similar products in the market:

Key Features:

- **Impact Resistance:** Withstands strong impacts and remains intact within the frame even when shattered, effectively preventing intrusion and minimizing the risk of injury to users.
- **Soundproofing and Thermal Insulation:** Provides excellent noise reduction and thermal efficiency, ensuring a quiet and comfortable environment for work and relaxation.
- **UV Protection:** The PVB film effectively blocks nearly all harmful UV rays, which can damage health and cause fading of furniture, while maintaining clear visibility and optimal brightness for your space.

Eurowindow's safety glass products have been certified by the British Standards Institution (BSI) with the Kitemark, meeting the standards of: BS EN 12150-1:2000, BS EN 14449:2005, TCVN 7364-2:2004

And achieved Class 1 Impact resistance classification according to BS EN 12600

This makes Eurowindow safety glass is an optimal solution for windows and doors in high-rise buildings, projects near transportation hubs or intersections, factories, airports, and soundproof studios, etc.



GEORGIAN BAR

Geogian bars are designed to add aesthetic appeal while enhancing the feeling of security for window and door systems. They add visual accents while creating a robust and safe environment for the space.

the bars are made from various materials, including uPVC, aluminum, or copper. Their size and colors can be easily coordinated with other structural elements to complement the overall design.





ALUMINUM DOORS AND LARGE ALUMINUM-GLASS FACADE SYSTEMS

Eurowindow's aluminum doors and large aluminum-glass façade systems are produced from premium aluminum materials. These systems are excellent tightness, light weight, and strong load-bearing capacity, overcome the common shortcomings of standard aluminum, such as weak structures, poor soundproofing and thermal insulation, and rainwater leakage.

The synchronized hardware system meets strict design requirements and are versatile in application, ranging from windows, doors, and large aluminum-glass facades to glass canopies. These products ensure ventilation and are particularly suited for high-tech buildings, such as office towers, shopping centers, hospitals, and international airports.

Advanced Production Technology Eurowindow invests in fully imported production lines from Europe to manufacture aluminum doors and facades. The facilities include: Automatic powder coating Lines: Utilizing powder coating and PVDF water-based coating technology from Wagner (Germany), producing products with vibrant colors, superior durability, scratch resistance, and resistance to corrosion from chemicals and weather. The system is capable of coating large aluminum panels and components up to 2.5m x 2.5m x 6m. **Wastewater Treatment System:** Fully automated and imported from Singapore, ensuring wastewater is treated to "A Grade"—the highest environmental protection standard in Vietnam.

Eurowindow has extensive experience in designing and constructing large aluminum-glass façades for specialized and architecturally complex projects, delivering solutions that combine functionality, aesthetics, and sustainability.

ADVANTAGES

Soundproofing and Thermal Insulation:

Eurowindow's aluminum profiles (available with or without thermal breaks), combined with insulated glass units (IGUs), EPDM seals, and synchronized hardware, provide excellent soundproofing and thermal insulation. Notably, aluminum profiles with thermal breaks offer up to 40% better soundproofing and insulation compared to standard aluminum heat insulation.

Superior load-bearing capacity: The aluminum profiles are meticulously designed with hollow chambers, reinforcement ribs, and carefully calculated structural grooves and walls. The thoughtful construction, including drainage channels and empty chambers, ensures the profiles can withstand high levels of impact. Systems with thermal breaks feature additional reinforcing ribs and hollow chambers, further improving load-bearing capacity.

Lightweight and Durable: Aluminum is a lightweight yet durable material. Its hollow chamber design and optimized reinforcement ribs significantly reduce the load on the structure compared to traditional wall materials. The profiles are engineered to endure high wind loads, storms, and earthquake impacts, providing a safe and reliable solution for various projects.

Cost-effective: For high-rise buildings with extensive sun exposure, energy costs for air conditioning and ventilation systems can be high. Using aluminum doors and large aluminum-glass façades with thermal breaks is a key solution for energy savings. The aluminum profiles are surface-treated and powder-coated using advanced technology, offering high durability and resistance to harsh weather conditions, preserving the door's color and structure. Additionally, aluminum doors and facades are easy to maintain, requiring only regular cleaning to keep them looking new without the need for frequent repairs or maintenance.

Aesthetic design: Aluminum doors and large aluminum-glass façades maximize space utilization and offer expansive views, creating a connection with nature. The concealed frame design ensures large, flat glass surfaces without visible reinforcements. In addition to regular glass, decorative options such as colored, patterned, or frosted glass enhance privacy and aesthetic value. Aluminum profiles with thermal breaks can be coated in different colors on each side, matching both exterior architecture and interior décor.

Eurowindow's aluminum doors and large aluminum-glass façade systems meet European quality standards as well as Vietnamese Standards (TCVN), ensuring exceptional performance and reliability:

TCVN 330:2004 – Aluminum alloy profiles. TCVN 7452-1:2004 – Air permeability, TCVN 7452-2:2004 – Waterproofing, TCVN 7452-3:2004 – Wind pressure resistance, ISO 140-5 – Soundproofing capabilities.



THERMAL BREAK ALUMINUM DOORS

Thermal Break Aluminum Doors and WindowsEurowindow's aluminum with thermal break doors and façades offer numerous advantages over standard aluminum systems. With a three-layer structure consisting of two extruded aluminum profiles joined by a thermal polyamide strip in the middle, the profile features a multi-chambered design with reinforcing ribs and precisely engineered technical grooves. Combined with a premium seals system and insulated glass units, the product delivers outstanding soundproofing and thermal insulation, lightweight construction, high durability, superior airtightness, and excellent impact resistance. Eurowindow's aluminum with thermal break doors and façades are the perfect choice for luxury projects, meeting the highest standards in both functionality and aesthetics for luxurious architectural designs.

ADVANTAGES

SUPERIOR SOUNDPROOFING AND THERMAL INSULATION: The aluminum profiles feature a polyamide thermal break, three layers of EPDM or Santoprene gaskets (an environmentally friendly material), and long-legged glazing gaskets, forming three hollow chambers. Combined with Low-E insulated glass or blinds within the glass unit, this enhances soundproofing and thermal insulation. The system reduces heat transfer by approximately 40% in summer and retains warmth during winter.

HIGH AIRTIGHTNESS AND WATER RESISTANCE: The three-layer gasket system between the frame and sash, with integrated water barriers, ensures superior airtightness and watertightness. The system meets Class 3 airtightness standards (BS EN 1027:2016) and achieves a water resistance of up to 600 Pascal, equivalent to a level 11 storm.

HIGH LOAD-BEARING CAPACITY: The aluminum profile is designed with multiple hollow chambers, reinforcement ribs, and meticulously calculated technical grooves to ensure a solid structure for the door frame. The thermally broken aluminum profiles can withstand wind loads up to a level 17 storm (equivalent to 2000 Pascal).

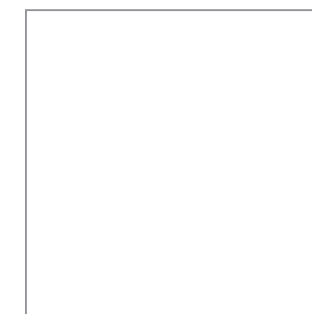
LARGE DIMENSIONS: The thermal break aluminum door system can accommodate maximum sash heights of up to 3 meters.

HIGH DURABILITY: The synchronized hardware, sourced from leading European manufacturers, ensures stable operation and long-lasting performance. The unique corner crimping and adhesive injection techniques enhance joint strength, ensuring the system operates smoothly and resists sagging over time.

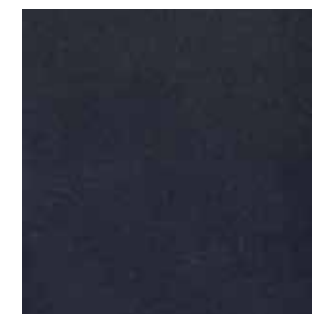
AESTHETIC APPEAL: The systems offer a diverse and modern color palette, suitable for a variety of design styles and green architecture trends. Aluminum profiles can be coated in two different colors on the interior and exterior to harmonize with the building's design. Decorative glass options, such as colored glass, patterned glass, and frosted glass, further enhance the aesthetic value.

HIGH ECONOMIC EFFICIENCY: The profiles undergo advanced surface treatment and powder coating, ensuring long-lasting color and structural integrity, minimizing maintenance costs. The system's excellent soundproofing and heat insulation capabilities also help reduce energy consumption, offering long-term economic benefits.

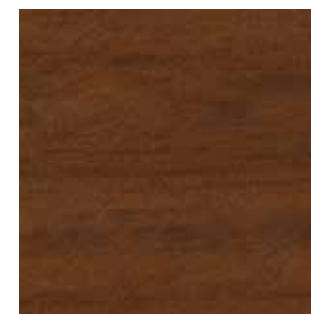
AVAILABLE COLOR OPTIONS



RAL 9010 Glossy



PCTV-73634-Rough Grey



Walnut Rough 0319



196T Glossy



RAL 7043 Rough



RAL 9007 Rough



198N Rough



198T Glossy

Color illustration. Actual product displayed at Eurowindow showroom.



ALUMINUM DOOR PRODUCT LINES



OUTWARD OPENING WINDOW

This window system can be opened at 90° angle with compact and elegant frame design.

COMPONENTS

- Powder coated aluminum profile (Window frame, jamb).
- Glass (tempered, laminated): 5mm, 6mm, 6.38mm, 8mm, 8.38mm, 10mm, 10.38mm, 12mm, 12.38mm.
- Double glazing units: 18mm, 20mm, 22mm, 24mm, 30mm, 32mm.
- EPDM gaskets system ensures tight seal.
- System hardware: multi-point latches, friction hinges, handles.



TOP HUNG WINDOW

This window system can be flexibly adjusted to each location's demand to ensure safety for the users.

COMPONENTS

- Powder coated aluminum profile (window frame, jamb).
- Glass (tempered, laminated) : 5mm, 6mm, 6.38mm, 8mm, 8.38mm, 10mm, 10.38mm, 12mm, 12.38mm...
- Double glazing units: 18mm, 20mm, 22mm, 24mm, 30mm, 32mm.
- EPDM gaskets system ensures tight seal.
- System hardware: multi-point latches, friction hinges, handles, ...



TILT AND TURN WINDOW

Turn and tilt in windows can be opened with 2 techniques: swing in or tilt in at 15°. This system is suitable for installing insects screen and easy to clean.

COMPONENTS

- Powder coated aluminum profile (Window frame , jamb).
- Glass (tempered, laminated): 5mm, 6mm, 6.38mm, 8mm, 8.38mm, 10mm.
- Double glazing units: 19mm
- EPDM gaskets system ensures tight seal.
- System hardware: multi-point latches, turn and tilt hinge, handles, ...



SLIDING WINDOWS

This type of window is opened by sliding on the rails; it has a compact, elegant frame, with distinctive structure. This will be the best solution for space required area and also prevents windows from flapping. Fur seal system supports sound and heat insulation.

COMPONENTS

- Powder coated aluminum profile (Door frame , side frames).
- Glass (tempered, laminated): 5mm, 6mm, 6.38mm, 8mm, 8.38mm.
- Double glazing units: 16mm (5+6+5).
- EPDM gaskets system ensures tight seal.
- System hardware: Rollers , locks , locks breaks.



CASEMENT DOORS

Casement doors can open up to 180° and are designed with slim, streamlined frames and distinctive profiles. This system ensures the highest levels of airtightness, soundproofing, and heat insulation compared to other door-opening styles.

COMPONENTS

- Powder coated aluminum profile (Door frame , jamb).
- Glass (tempered, laminated): 5mm, 6mm, 6.38mm, 8mm, 8.38mm, 10mm, 10.38mm, 12mm , 12.38mm.
- Double glazing units: 18mm, 20mm, 22mm, 24mm, 30mm, 32mm.
- EPDM gaskets system ensures tight seal.
- System hardware: multi-point latches, 3D hinges, handles



SLIDING DOORS

Sliding doors operate by gliding along tracks, featuring compact and distinctive frames. They are an excellent choice for areas requiring space efficiency and safety by preventing door collision. Equipped with a brush gasket system, the sash seals tightly into the frame, providing superior airtightness, soundproofing, and thermal insulation.

COMPONENTS

- Powder coated aluminum profile (Door frame , side frames).
- Glass (tempered, laminated): 5mm, 6mm, 6.38mm, 8mm, 8.38mm.
- Double glazing units: 20mm, 21mm.
- EPDM gaskets system ensures tight seal.
- System hardware: roller, locks, locks breaks.



FOLD SLIDING DOORS

Fold sliding doors combine sliding tracks and hinged panels, allowing the panels to fold neatly when opened. This system is designed with slim, distinctive frames and is ideal for creating large open spaces, such as doors leading to gardens, patios, or swimming pools

COMPONENT MATERIALS

- Electrostatic powder coating profiles (for the frame and sash frame) form the primary load-bearing structure of the door.
- Single Glass (Tempered or Safety Glass): Available in thicknesses of 6mm, 6.38mm, 8mm, 8.38mm, 10mm, and 10.38mm.
- Double glazing: 22mm
- High-quality EPDM gaskets ensure excellent airtightness and durability.
- Accessories include rollers, locks, lock stoppers, hinges, and latches for smooth operation and secure locking.

The Matrix One
No 1 Le Quang Dao, Me Tri,
Tu Liem, Hanoi





ALUMINUM-GLASS CURTAIN WALL

Features:

- Designed to meet diverse architectural requirements, large aluminum-glass curtain walls are suitable for high-rise buildings and can be customized with or without aluminium georgian bar on the exterior.
- Provide excellent soundproofing and thermal insulation, while ensuring natural lighting for a comfortable and energy-efficient environment.
- Offer a wide range of designs, making them adaptable to various architectural styles.
- Comply with European standards for sound – heat insulation, and airtightness.
- Ideal for high-tech architectural designs, enhancing the modern appeal of buildings.
- Feature a lightweight and streamlined construction, enabling quick and efficient installation.
- Deliver exceptional load-bearing capacity and long-lasting durability, ensuring reliable performance in demanding environments.
- A cost-effective solution
- A sleek and modern aesthetic.

Materials:

- Profiles are extruded from premium aluminum alloy, meeting European standards.
- Glass: single glass, safety glass, tempered glass, heat-strengthened glass, decorative glass, and insulated glass units (filled with inert gas for soundproofing and

thermal insulation).

- Gasket System is made from EPDM material, resistant to aging and ensuring excellent airtightness.

Surface Types of Large Aluminum-Glass Facades:

- Facades with External Aluminum Georgian Bar (Horizontal and Vertical georgian bar): This structure provides a robust and solid appearance for the building. With Eurowindow's advanced aluminum coating technology, customers can choose from a wide range of colors for the external mullions, enhancing the aesthetic appeal of the entire structure.
- Facades Combining Aluminum Georgian Bar or Without it: This structure creates visual accents with horizontal or vertical lines on the building's exterior. The combination of horizontal and vertical Georgian Bar results in a unique and highly aesthetic design.
- Facades Without External Aluminum Georgian Bar: This structure creates a smooth, unified exterior surface, giving the impression of a single, large glass panel when viewed from the outside. This design is ideal for incorporating glass panels in various colors for decorative purposes and is also suitable for large electronic advertising screens.

Large Aluminum-Glass Facades Are Divided into Two Main types:

- Stick System
- Unitized System.



STICK SYSTEM ALUMINUM-GLASS FACADE

The Stick System involves the production and processing of aluminum profiles, glass panels, and other components at the factory. All assembly, installation, and finishing works are carried out on-site. It is suitable for all types of building exteriors, particularly for structures with complex architectural designs or numerous connection points.

Unlike the Unitized System, the Stick System involves on-site assembly of individual components, following the progress of the building's structural construction.

The installation of the Stick system is carried out in specific steps as follows:

- The vertical mullions are installed first and connected sequentially section by section.
- The horizontal mullions are attached to the vertical mullions once the vertical mullions are fully installed.
- The final step involves installing the glass panels, aluminum panels, and applying sealant for completion.

Advantages:

- Provides a safe structure with excellent waterproofing capabilities.
- The greatest advantage of the design and installation method of the Stick curtain wall system lies in its flexibility during transportation, construction, and installation.
- Allows for the construction of complex projects, such as angular and non-uniform surfaces.



UNITIZED SYSTEM ALUMINUM-GLASS FACADE

The Unitized System is a large aluminum-glass facade system in which panels are manufactured, processed, and fully assembled at the factory. These completed panels are then transported to the construction site for installation and final assembly. The Unitized System works best for buildings with uniform exteriors of and floors with the same height. The distinguishing feature of this is that the aluminum-glass panels are prefabricated and fully assembled in the factory, including all components of each aluminum-glass frame – referred to as modules. These completed modules are then transported from the factory to the construction site and lifted into place by specialized cranes and lifting equipment to the pre-prepared installation points. These installation points are embedded during the concrete pouring of the floors and columns, under the supervision of engineers and with the use of precision surveying equipment to ensure accurate alignment.

Advantages:

- The facade provides a consistent and seamless appearance, meeting aesthetic requirements.
- Simplified construction process and Fast construction time make it suitable for time-sensitive projects.
- Tightly controlled product quality at the factory
- The system is highly stable and capable of withstanding building movements, ensuring durability and adaptability.
- Offers excellent soundproofing, thermal insulation, and waterproofing, enhancing building performance.
- Requires minimal on-site space and construction area, making it practical for high-rise projects.
- Provides expansive views and enhances the architectural aesthetics of any structure.



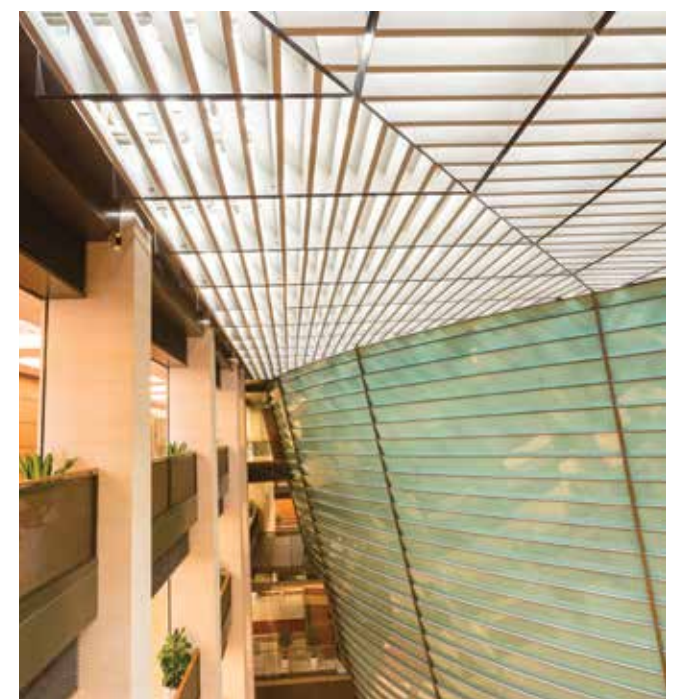
CANOPY

Features:

- Designed to integrate seamlessly with facades, the canopy system is ideal for areas requiring enhanced natural lighting, such as exhibition halls, stadiums, recreational areas, supermarkets, and restaurants.
- Roof slope ranges from 18° to 60°.
- Supports glass thicknesses from 16mm to 32mm

Materials:

- Profiles: High-quality aluminum profiles with thermal breaks, manufactured in Europe.
- Insulated Glass Units (IGUs): Filled with inert gas to improve soundproofing and thermal insulation.
- Gasket System: Made from EPDM material, offering excellent aging resistance and ensuring airtightness.





uPVC DOORS AND CURTAIN WALLS

Eurowindow's uPVC product line primarily includes windows, doors, and curtain walls, ideal for projects such as hotels, villas, and apartments.

Eurowindow's uPVC doors are made with a uPVC profile structure in a hollow box structure, reinforced with steel cores, and equipped with a comprehensive accessories system, including multi-point locks, 3D hinges for multi-directional opening and closing, and specialized locks. Combined with dual seals, the system ensures excellent sealing performance, while the gas-filled glass units effectively reduce sound and heat transmission. Additionally, the high-quality uPVC material is resistant to oxidation and yellowing under sun exposure, ensuring long-lasting aesthetics. These characteristics make Eurowindow uPVC doors highly effective in soundproofing and thermal insulation, which leads to energy savings, reduced maintenance costs, and long-term economic benefits for users. The uPVC doors comply with wind pressure resistance, water tightness, profile welding durability, and sound insulation standards, as defined in TCVN7451:2004 standard and 7452-2:2004 standard.



ADVANTAGES

SOUNDPROOFING AND THERMAL INSULATION

Eurowindow's uPVC doors provide a quiet and tranquil environment, creating a truly comfortable living space. The system is meticulously designed with a synchronized structure, including a shaped frame, insulated glass units, and gaskets, ensuring optimal soundproofing and heat insulation performance.

For example, the external noise levels of a room located near a busy roadway can reach up to 85 dB, with Eurowindow uPVC windows, the noise inside is reduced to just 40-45 dB. This significant noise reduction enhances the quality of life for occupants. In addition to soundproofing, Eurowindow's uPVC doors offer 2-4 times better heat insulation compared to conventional doors. This feature helps reduce energy consumption for heating and cooling, delivering both environmental and economic benefits for users.

SUITABLE FOR TROPICAL CLIMATE

Durability in Tropical Conditions:

Eurowindow's uPVC doors are designed to withstand the hot, humid, and rainy climate of Vietnam. The outstanding properties of uPVC include long lifespan, resistance to oxidation, and prevention of aging or yellowing under sunlight and tropical conditions. The incorporation of additives and stabilizers in the material formulation ensures superior adaptability to high temperatures and humidity. The success of uPVC in tropical climates has been demonstrated by its widespread adoption in other Asian countries such as China, Singapore, Malaysia, Thailand, etc.

HIGH STABILITY

Unlike traditional wooden doors, which are prone to warping and shrinking in Vietnam's tropical climate, Eurowindow's uPVC doors maintain its durability and original aesthetics throughout its lifespan. The precise alignment between the frame and sash ensures airtightness, keeping rooms warm during winter and cool during summer.

ECONOMIC EFFICIENCY

While the initial investment cost of uPVC doors is higher than some traditional options, they offer significant long-term savings due to reduced energy consumption and minimal maintenance costs. The combination of functional hardware, tight-fitting sashes, and stable frames eliminates issues like warping, discoloration, and frequent repairs, delivering both short-term and long-term economic benefits for users.

FIREPROOF

Eurowindow's uPVC doors are made from polymer material with fire-resistant additives, ensuring they do not decompose into flammable components even under high temperatures. At temperatures close to 1000°C, the uPVC material only deforms without igniting, minimizing the spread of fire during emergencies. This eliminates the risk of flame propagation through the door structure, offering enhanced safety in fire or explosion incidents.

COMPONENTS AND FEATURES OF uPVC WINDOWS, DOORS, AND CURTAIN WALLS

PROFILE

Eurowindow's uPVC profiles serve as the primary structural component of its windows, doors, and partitions. These profiles are designed with a box-like structure, reinforced with galvanized steel cores to deliver exceptional soundproofing, heat insulation, and load-bearing capacity.

The uPVC profiles used in Eurowindow products are designed with a box-like structure, divided into multiple hollow chambers. These chambers enhance soundproofing and thermal insulation, while galvanized steel reinforcements are added to improve the load-bearing capacity and durability of the door or window system.

Unlike conventional plastics, uPVC is a rigid material modified with specialized components to enhance its properties: Acrylic Polymers: Provide durability and resistance to strong impacts. Stabilizers: Protect the material from the effects of heat and UV radiation. Waxes: Ensure a smooth, glossy surface, enhancing the profile's visual appeal.

Eurowindow exclusively uses uPVC profiles manufactured by Koemmerling, a globally renowned company from Germany with over 100 years of expertise. Koemmerling is recognized as one of the world's leading manufacturers and suppliers of uPVC profiles. Currently, Eurowindow is the exclusive distributor of Koemmerling profiles in Vietnam, ensuring access to premium-quality materials for its customers. The hollow chambers in the profiles provide soundproofing and thermal insulation, while also serving as channels for rainwater drainage.



1 The hollow chambers in the profiles provide soundproofing and thermal insulation, while also serving as channels for rainwater drainage.

3 The door frame profile is designed with multiple grooves that allow for easy connection with other profiles, thereby enhancing the strength of the joint after installation.

5 The grooves are also designed to accommodate accessories, ensuring that the door achieves a high level of stability and safety.

2 In addition to its role in soundproofing and thermal insulation, the hollow chambers within the profile are used to house galvanized steel reinforcements.

4 It serves as the location for installing special rubber seals that ensure high sealing, soundproofing, and heat insulation performance.

6 Additionally, it is the place for installing specialized glass gaskets, designed to accommodate various types of glass and glass units with different sizes.

ACCESSORIES

Eurowindow's accessories is designed for seamless functionality and enhanced durability, featuring multi-point locking mechanisms and 3D adjustable hinges to ensure doors remain airtight, secure, and capable of multi-directional opening and closing.



Eurowindow utilizes accessories from leading German manufacturers and proprietary hardware developed in-house. This combination ensures the system not only enhances the aesthetic appeal of the doors but also delivers exceptional safety, precision, and reliability, overcoming the limitations of conventional hardware systems.

The system supports various opening styles, including inward - outward opening, outward tilting, tilt-and-turn inward opening, sliding, parallel sliding.



Adjustable in 03 dimensions, these 3D hinges allow for precise alignment and adjustment during installation and throughout the product's lifespan. The hinges are securely fastened directly to the reinforcing steel core within the uPVC profile using specialized screws, ensuring long-term stability and robustness.





TYPES OF uPVC DOORS

TILT-AND-TURN WINDOWS



Tilt-and-turn windows offer three opening modes for versatility and safety: Tilt for Ventilation (1–20°): Allows the airflow for fresh air circulation; Wide Tilt (150°): Provides increased ventilation while maintaining safety; Full Swing (180°): Fully opens for maximum air circulation or for creating an open connection between rooms. These windows are particularly safe and functional for high-rise buildings, making them ideal for modern architectural projects. Tilt-and-turn windows are considered one of the most advanced designs in uPVC window systems and are widely used worldwide, especially in European countries.

Multi Point Locking and Dual Gasket System ensures the frame and sash are tightly secured when closed, providing exceptional airtightness, soundproofing, and thermal insulation. Additionally, this system enhances security by acting as an anti-burglary feature, preventing unauthorized access.

AWNING WINDOWS



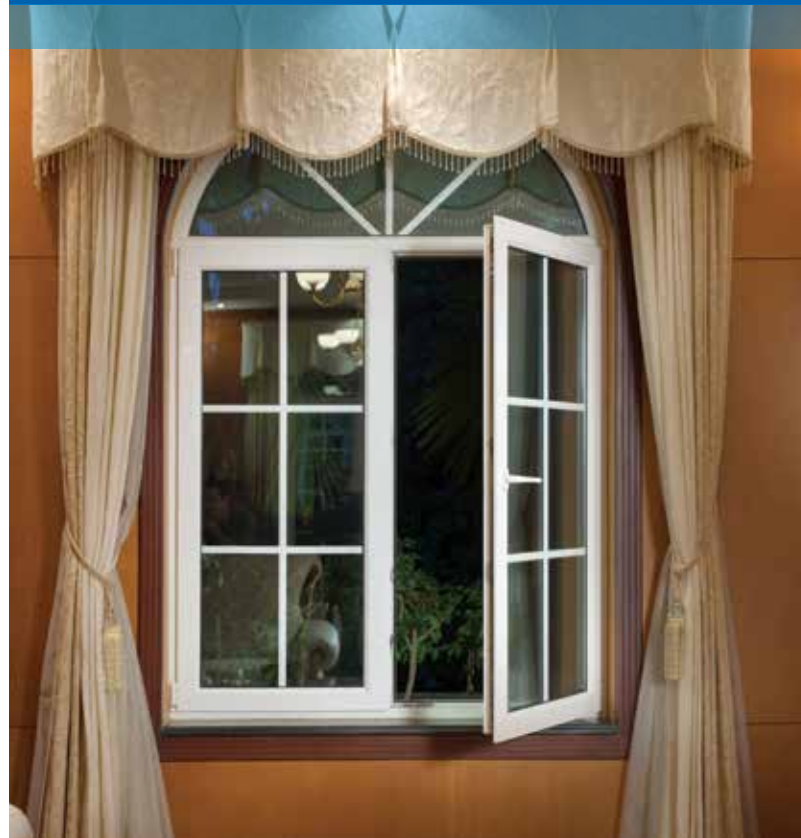
Open outward with an angle of 45°.

Larger windows are often fitted with a restrictor bar to keep the opening angle fixed at 30° and prevent the sash from accidentally slamming shut during use.

Equipped with a multi-point lock system and dual gaskets, ensuring high airtightness, soundproofing, and thermal insulation.

The multi-point locking mechanism also enhances security by preventing unauthorized access.

INWARD CASEMENT WINDOWS



These windows share a similar structure and features with tilt-and-turn windows but operate in only one mode, opening inward with a maximum angle of 180°.

OUTWARD-OPENING CASEMENT WINDOWS



Open outward at nearly 90°, with a restrictor bar to prevent the sash from hitting the wall.

Features a multi-point lock system and dual gaskets for superior soundproofing, thermal insulation, and airtightness.

Designed to avoid interfering with the room's usable space when opened.

SLIDING WINDOWS



Operate by sliding the sash along tracks. Offer a cost-effective alternative compared to other uPVC windows with similar glass specifications. Compatible with different locking systems, including crescent locks, flip locks, and multi-point locking systems.

SLIDING DOORS



Operate on 1 to 3 tracks and can feature 2 to 6 sashes, allowing for an opening area ranging from $\frac{1}{2}$ to $\frac{2}{3}$ of the door frame. When opened or closed, it does not affect the space or usable area of the room. It allows for the creation of large-sized doors. Capable of accommodating large sash sizes, with a lower cost compared to other types of sliding doors.

INWARD - OUTWARD - OPENING DOORS



Built with multi-point locks, 3D adjustable hinges, dual gaskets, and insulated glass for excellent airtightness, soundproofing, and thermal insulation. Made from robust large-profile frames, ensuring durability and stability. Available in a variety of sizes and styles to suit diverse architectural designs.

FOLD SLIDING DOORS



Feature multiple sashes that open by sliding and folding along tracks. Can include sashes that swing open for added flexibility. Ideal for large openings, such as garden doors, poolside entrances, or balcony doors. Provide high soundproofing, thermal insulation, and airtightness. Constructed from large-profile frames for superior strength and stability.



GLASS PARTITION



Glass is a custom patterned clear or sandblasted glass wall inset into the ceiling and floor. Glass gives your partition walls a high-quality appearance and creates light, open rooms. Its soundproofing properties allow you to work undisturbed and in peace – ideal conditions for offices. Flexible operation, easy installation.

uPVC PARTITIONS



Extremely useful assortment of uPVC Partitions that are re-locatable wall systems and are very advantageous in comparison to the fixed construction. Offered partitions are modular and do not require painting or wall coverings. Customized pattern will be suitable for the dimensions of your space.



Eurowindow River Park
Dong Hoi, Dong Anh, Hanoi



WOODEN DOORS

While uPVC doors are the ideal solution for exterior applications such as windows and balcony doors, wooden doors are often chosen as the optimal solution for interior spaces, complementing the home's interior design.

Traditionally, people often chose wood types such as Ironwood, Hopea wood, Xylia wood,... for their excellent properties, including hardness, strength, resistance to compression, termite resistance, and attractive grain patterns. However, even with these high-quality woods, large solid wood panels could shrink or crack over time due to changes in humidity and temperature.

Eurowindow's wooden doors overcome these challenges through advanced manufacturing processes and technology transfer from renowned global wooden door manufacturers. With modern, fully equipped production facilities, Eurowindow's wooden doors retain the natural benefits of traditional materials while offering enhanced performance, including stability, airtightness, aesthetic appeal, fast production and installation times.

Eurowindow wooden doors are not only available in a variety of designs, catering to styles ranging from classic, semi-classic, and modern to high-tech, but also meet TCVN 9366-1:2012 standard, ensuring performance in wind pressure resistance, water tightness, impact durability.



ADVANTAGES

Stability: The input raw materials for Eurowindow wooden doors are processed and kiln-dried to meet export moisture standards (12–14%). Plantation timber is laminated and treated using wood modification technology, ensuring high hardness and durability. This significantly reduces the risk of warping and shrinking due to weather changes.

Quiet and Airtight Operation with Superior Insulation: Eurowindow wooden doors are equipped with specialized gaskets imported from Europe, enabling smooth, silent, and airtight operation. These features ensure excellent soundproofing and thermal insulation, providing a comfortable environment.

Aesthetic Appeal: Each piece of wood is carefully selected before production, and the automated painting system ensures a smooth surface, consistent color, and high aesthetic value. This process also enhances the product's durability.

Fast construction time: Eurowindow wooden door frames and panels are designed for industrial assembly, making them suitable for the final stages of construction projects. This design accelerates installation time, minimizing overall construction timelines.

High Economic Efficiency: With exceptional durability, Eurowindow wooden doors offer long-term economic benefits, reducing maintenance and replacement costs.

Product Range

Eurowindow offers a wide variety of wooden doors, including Natural wood doors, MDF and HDF wood doors, Hybrid wooden doors. These products are available in diverse styles and designs, such as glass-paneled doors, solid-paneled doors, and decorative wooden doors with embossed or seamless trim. They cater to most needs for main entrances and interior doors in construction projects. Eurowindow wooden doors combine functionality, aesthetic excellence, and long-term value, making them a top choice for modern building solutions.



NATURAL WOODEN DOOR

Eurowindow's natural wooden doors are crafted from solid natural wood, treated with wood modification technology to enhance durability and performance. This ensures that the doors not only maintain their aesthetic appeal and stable quality but also minimize warping and shrinking, even in Vietnam's challenging climate conditions.

ADVANTAGES

- Natural wooden doors seamlessly blend with a home's interior architecture, adding elegance and warmth.
- Produced on a modern, synchronized production line, ensuring excellent quality and precision.
- The fully automated industrial painting system provides enhanced protection, extending the product's lifespan while maintaining high aesthetic standards.
- Equipped with specialized rubber gaskets, adjustable hinges, and a synchronized hardware system, ensuring airtightness and quiet, smooth door operation.
- The advanced wood treatment process significantly reduces deformation caused by temperature and humidity changes.
- Available in a variety of styles and sizes, catering to diverse architectural needs and personal preferences.



FINGER - JOINTED WOOD DOORS

Finger-Jointed Wood doors are constructed from laminated wood, sourced from plantation timber, with a natural veneer applied to the surface. The Finger-Jointed Wood is treated with wood modification technology prior to production, ensuring increased stability, durability, and resistance to warping or deformation in Vietnam's challenging climate.

The natural veneer is applied to the Finger-Jointed Wood surface using a vacuum press machine and specialized adhesives that meet European standards. This technology enhances the door's aesthetic appeal and ensures its long-term durability. Additionally, the fully automated industrial painting system provides superior protection, extends the product's lifespan, and enhances its visual appearance.

ADVANTAGES

- Exceptional Durability and Stability due to the laminated structure, which minimizes warping and shrinking, ensuring the door remains robust and reliable over time.
- High Aesthetic Value makes these doors a perfect match for interior spaces.
- Affordable Pricing.



INDUSTRIAL WOODEN DOORS

Industrial wooden doors feature a specialized technical structure and incorporate advanced technologies to enhance performance. The wood used in these doors undergoes wood modification treatment and is laminated with other materials such as MDF and HDF, which are resistant to warping and shrinking. This combination ensures that the doors remain affordable while maintaining high quality and offering a wide range of styles and designs.

ADVANTAGES

- Versatile Designs
- Resistance to Warping and Shrinking
- Heat Insulation
- Equipped with specialized gaskets, adjustable hinges, and a synchronized accessories, ensuring tight sealing and smooth, silent operation.
- The fully automated industrial painting system enhances protection, prolongs the product's lifespan, and provides a superior aesthetic finish.
- Affordable Pricing.



FIRE - RESISTANT WOODEN DOORS

In 2012, Eurowindow introduced fire-resistant wooden doors to meet market demand, expanding its product range beyond interior doors and main entry doors. These doors have been used in prestigious projects such as the National Assembly Building, Government Office, and various luxury urban developments.

Eurowindow fire-resistant wooden doors are designed with a robust structure for enhanced safety and durability, consisting of Natural wood frame; Calcium silicate fire-resistant board; Glass wool or Rock wool enhancing soundproofing, thermal insulation, and noise reduction; Fire-resistant gasket; Natural wood veneer and PU coating. In which, Silicate is a non-toxic, odorless, dust-free material with high durability, low thermal conductivity, and excellent soundproofing and heat insulation properties.

The fire-resistant gasket and components, such as hinges, hydraulic closers, locks, and handles, are imported from leading European manufacturers. These are made from high-temperature-resistant steel, ensuring normal operation during a fire. The doors come in a variety of colors and veneer options, with fire resistance durations of 70 minutes or longer, depending on the materials and door thickness (50mm, 60mm, 70mm, etc.). These doors are primarily designed for main entrances, interior doors, and a wide range of construction projects.

Eurowindow's fire-resistant wooden doors not only provide safety and durability in fire emergencies but also maintain a sophisticated aesthetic, making them a trusted choice for both residential and commercial projects.



COMPOSITE WOODEN DOOR

Overcoming the weaknesses of traditional industrial wooden doors and combining the strengths of 2 materials (wood and PVC), Eurowindow's Composite Wooden Doors represent a modern product line with exceptional durability.

These doors are made from finely ground wood powder, PVC granules, and additives such as stone powder for smoothness and rigidity. The wood-plastic composite mixture is blended evenly and heated at 200°C, then extruded and pressed into various shapes as required.

The surface of Composite Wooden Doors is coated with a high-quality PVC film using vacuum thermal pressing technology, simulating natural wood grain with uniform coloring and excellent scratch resistance. The doors feature intelligent trim systems that clip directly into the frame without the use of nails or adhesives, ensuring high aesthetic value and easy assembly or repair. Manufactured using environmentally friendly materials, Composite Wooden Doors align with modern sustainable development trends and are trusted by investors for applications in villas, apartments, hotels, hospitals, schools, and other architectural projects.

ADVANTAGES

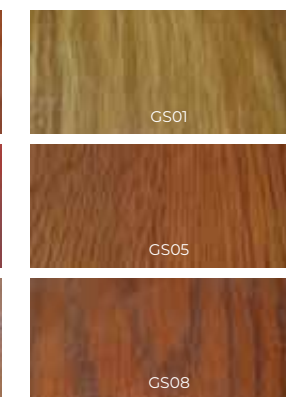
- Absolute water resistance due to the polymer molecules encapsulating wood molecules prevent water vapor from penetrating the door.
- High Durability and Stability, Resistant to warping, shrinking, cracking, and termites.
- The solid molded frame and sash with a 40mm thick panel provide excellent strength and impact resistance.
- The hollow box-profile design, combined with dual gaskets, ensures superior airtightness, soundproofing, and thermal insulation.
- Lightweight construction facilitates easy installation and handling.
- The material has low flammability and only deforms at temperatures above 120°C, reducing the risk of fire spreading.
- Free from formaldehyde, making it safe for users and environmentally friendly.
- Available in a variety of colors and wood grain patterns to suit different interior styles.
- Ideal for interior doors, bathroom doors, and restroom doors.
- Affordable Pricing.

WOOD AND VENEER OPTIONS

IRON WOOD



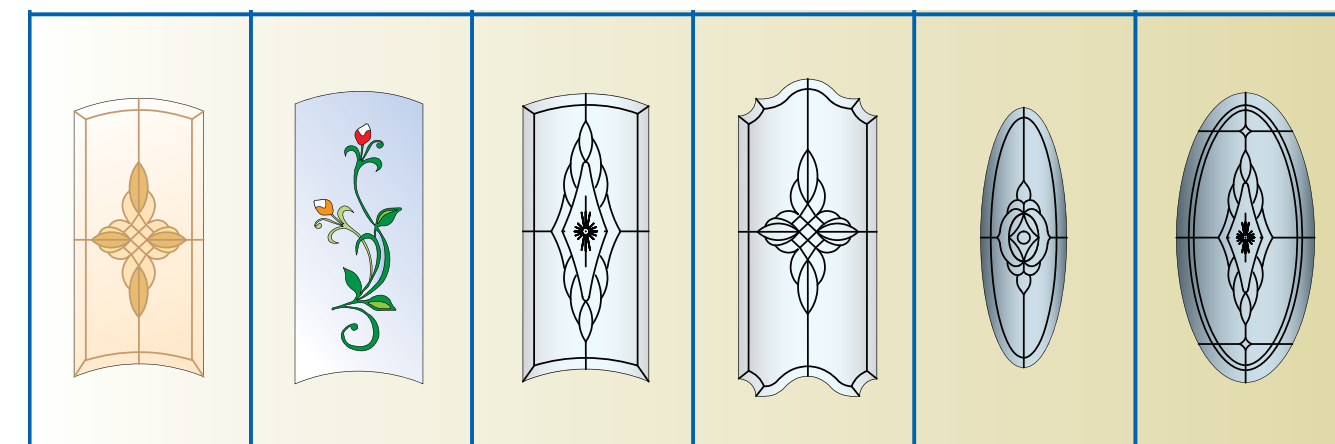
OAK WOOD



REDWOOD



DECORATIVE GLASS PATTERNS



ACCESSORIES

Eurowindow utilizes accessories manufactured by leading European brands, ensuring top-tier quality and performance. The accessories are synchronized and integrated with features such as 3D adjustable hinges, multi-point locks, and specialized locking mechanisms. This combination not only enhances the aesthetic appeal of Eurowindow's products but also ensures robustness, safety, and long-lasting durability.

HANDLES



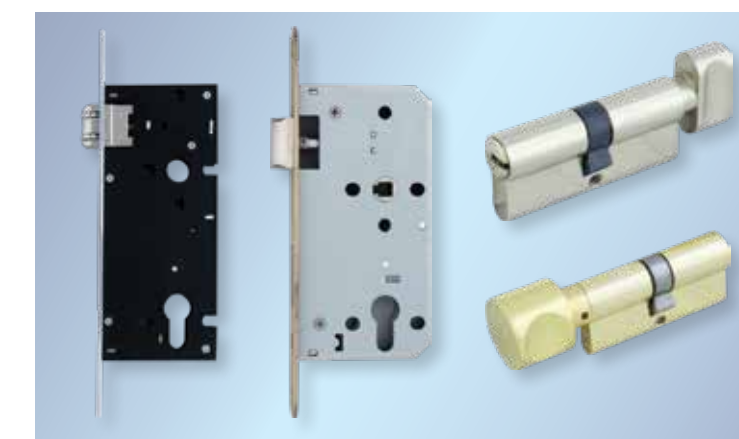
3D HINGES



LEAF HINGES



LOCK MECHANISMS





ALUMINUM ROLLER SHUTTER DOORS WITH VENTILATION SLOTS

In modern architecture, roller shutter doors have become an indispensable element, combining functionality, aesthetic appeal, and safety. To meet the growing demand for these versatile products, Eurowindow has introduced the EASD45 Aluminum Roller Shutter Doors with Ventilation Slots. This product line embodies the key qualities of being modern, durable, safe, quiet, and elegant.

The EASD45 roller shutter doors feature a circular roller design and a double-layer slat system made from extruded aluminum profiles. The slat hooks are specially designed with widened openings to create ventilation slots, allowing users to keep the door closed while maintaining adjustable airflow. The slat system is engineered for rigidity and stability, ensuring smooth and quiet operation when rolled. The EASD45 Aluminum Roller Shutter Doors are an ideal solution for Shophouse facades, villas, garage entrances.

PRODUCT FEATURES

- The slat is made from 6063T5 aluminum alloy
- Slat thickness is 1mm, suitable for openings up to 4m wide and 4m high
- Double-layer slat design with two screw holes for secure end caps, integrated groove system for shock-absorbing gaskets, minimizing noise during door operation.
- Slat is coated using Eurowindow's modern painting technology, ensuring a smooth, durable, and visually appealing finish.
- Equipped with genuine motors tailored to door size for maximum longevity and reliable performance.
- Safety sensor system is equipped with advanced features to ensure security and reliability:
- Automatically stops or reverses the door's direction if it encounters an obstacle and sounds an alert in the event of tampering, forced entry attempts, or encountering an obstacle.
- Equipped with connection points to the fire protection system. When a fire alarm signal is triggered, the door automatically opens to facilitate safe evacuation.
- Operated via a rolling code, ensuring absolute security by preventing code duplication or scanning.



AUTOMATIC SLIDING DOORS (TWO-SASH)

INTRODUCTION:

Eurowindow's two-sash automatic sliding doors are available in two design options: Sliding glass doors with aluminum frames. Frameless sliding glass doors.

These doors feature large dimensions, with a maximum height of 3 meters, offering excellent durability and rigidity. They are ideal for high-traffic areas, ensuring smooth and efficient operation.

Integrated with Four Operating Modes:

- Automatic Mode: The door opens automatically when motion is detected and closes after the user passes through.
- Permanently Open Mode: Keeps the door open continuously, suitable for high-traffic periods or when constant accessibility is needed.
- One-Way Mode: Designed for locations like stores or supermarkets, this mode allows movement in only one direction, such as exiting from inside.
- Night Mode: Fully locks the door, permitting access only through a remote control or manual operation from inside the building, enhancing security during off-hours.

FEATURES:

- Capable of withstanding significant force and ensuring long-term performance.
- Modern and sophisticated appearance.
- Advanced Safety with automatic opening and closing, Self-diagnosis and error warning system, Compatible with building fire alarm systems for enhanced security.

APPLICATIONS:

Eurowindow's two-panel automatic sliding doors are ideal for main entrances and lobby areas, such as Office buildings, Hotels, residential complexes, shopping malls.



AUTOMATIC REVOLVING DOORS (3 OR 4 PANELS)

INTRODUCTION:

Eurowindow's 3- or 4-panel automatic revolving doors are imported fully assembled from leading manufacturers in Germany and Italy. These doors are ideal for high-traffic areas, ensuring efficient flow and enhanced aesthetics in building entrances.

Operating Modes:

- NIGHT Mode: The door is locked electrically, and all sensors are disabled. The door remains closed and is held in place by an electric brake.
- REVOLVE Mode: The door rotates continuously at a slow speed. When someone enters the radar detection zone, the door adjusts its speed to match the person's movement (two preset speeds).
- AUTOMATIC Mode: The door remains stationary under normal conditions. When a person approaches, the door automatically begins rotating.
- EXIT Mode: The door allows movement in one direction only, from the inside to the outside.
- MANUAL Mode: The door can be rotated manually with controlled speed to prevent it from spinning too quickly, especially in windy conditions.

FEATURES:

- Capable of withstanding significant force and ensuring long-term performance.
- Elegant aesthetic
- High safety standards during operation
- Operates smoothly without interruptions

APPLICATIONS:

These 3 - or 4-panel automatic revolving doors are perfectly suited for installation in Main entrances, Office buildings, Shopping malls, Hotels



BATHROOM GLASS PARTITIONS & HYDRAULIC DOORS



BATHROOM GLASS PARTITIONS

Using glass partitions for bathrooms is a current trend in interior design. Transparent glass combined with high-quality accessories brings a luxurious and modern aesthetic to the bathroom space, creating a sense of openness and spaciousness. The glass walls are made from tempered glass, offering high thermal and mechanical resistance. With a smooth surface, these glass walls are resistant to dirt accumulation, lack sharp edges, and are easy to clean and maintain.



HYDRAULIC DOORS

Hydraulic doors consist of several key components: glass, glass clamps, hinges, and handles. These doors are not only strong and easy to operate but also feature hydraulic hinges embedded into the floor, enhancing both safety and aesthetic appeal.

The doors can be opened and closed in both directions. The hydraulic piston system in the hinges ensures that the door automatically closes tightly, providing excellent sealing. These doors are commonly used in high-traffic areas such as storefronts, shopping malls, and office buildings.

HIGHLIGHTED **PROJECTS**

Eurowindow Office Building
2 Ton That Tung Street, Dong Da district, Hanoi



Diamond Crown
Le Hong Phong, Ngo Quyen, Hai Phong



On our journey of growth and development, Eurowindow has always strived to provide consumers with advanced, modern, and high-quality products that meet European standards, along with professional customer service. Up to this present, hundreds of thousands of projects both domestically and internationally have utilized Eurowindow products.



National Assembly House
Ba Dinh Dist. Hanoi



Government Office Building
No 01 Hoang Hoa Tham Str., Ba Dinh District, Hanoi



Ministry of Public Security Headquarters
Pham Van Dong Str, Hanoi



Headquarters of Ministry of Foreign Affairs
No 2 Le Quang Dao Str., Nam Tu Liem Dist, Ha Noi



National Assembly Office
Ba Dinh Dist, Hanoi



Headquarters of Quang Binh Provincial Party Committee
Dong Hoi City, Quang Binh



Binh Duong Administrative Centre
Thu Dau 1, Binh Duong



Ham Tan Commune Tax Department, Ton Duc Thang Avenue,
Phu Thuy Ward, Phan Thiet City, Binh Thuan Province



Can Tho International Airport
Binh Thuy Dist, Can Tho



Headquarters of Da Nang International Airport



Parliament Office
Hoang Sa Road, Son Tra District, Danang City



Headquarters of Lai Chau Provincial Party Committee
Lai Chau Town, Lai Chau.



Noi Bai International Airport, Hanoi



Vinh International Airport Vinh, Nghe An



Ministry of Natural Resources and Environment
10 Ton That Thuyet, Nam Tu Liem, Hanoi



The Supreme People's Procuracy of Vietnam
No. 9 Pham Van Bach, Cau Giay District, Hanoi



Buon Me Thuot International Airport, Dak Lak



Vientiane International Airport, Laos



Department of natural resources and environment of Hanoi
Ton That Thuyet, Hanoi



National Assembly of Laos
Thatluang Square, Vientiane, Laos



Van Don International Airport, Quang Ninh



Cat Linh - Ha Dong Train Station, Hanoi



High-Tech Building of Viet Duc University Hospital
40 Phu Doan, Hoan Kiem District, Hanoi



Ho Chi Minh City Children's Hospital
15 Vo Tran Chi, Tan Kien, Binh Chanh, Ho Chi Minh City



Vinmec International Hospital,
458 Minh Khai Street, Hanoi



Hai Duong General Hospital
Hai Duong Province



Da Nang Cancer Hospital, Hoa Minh Ward,
Lien Chieu District, Danang



Phu Tho General Hospital
Nguyen Tat Thanh, Viet Tri City, Phu Tho



Tu Du Hospital
Ho Chi Minh City



National Hospital of Tropical Diseases
Đông Anh, Hanoi



Central Military Hospital 108
No. 1 Tran Thanh Tong, Hai Ba Trung Dist, Hanoi



Vietnam - Cuba Friendship Hospital
Dong Hoi, Quang Binh



Military Hospital 175,
786 Nguyen Kiem, 3 ward, Go Vap, Ho Chi Minh



Vietnam - Czechoslovakia Friendship Hospital
Hai Ba Trung, Cat Dai, Hai Phong



Bach Mai Hospital 2
Phu Ly City, Ha Nam



Viet Duc Hospital 2
Phu Ly City, Ha Nam



Kien Giang General Hospital
Kien Giang Province



Vietnam - France Hospital
No 1 Phuong Mai, Dong Da District, Hanoi



Techcombank Hanoi Tower
No 5 Quang Trung, Hoan Kiem, Hanoi



Hong Ngoc - Phuc Truong Minh General Hospital
No 8 Chau Van Liem, Me Tri, Tu Liem, Hanoi



VP Bank Tower
No 89 Lang Ha, Hanoi



TH Bilingual School, No. 4-6 Chua Boc Street,
Dongda District, Hanoi



Silk Path Grand Resort & Spa
Sa Pa, Lao Cai



Novotel Thai Ha Hotel
No 2 Thai Ha, Dong Da District, Hanoi



Sheraton Grand Da Nang Resort
35 Truong Sa, Ngu Hanh Son, Da Nang



Vietcombank Tower
District 1, Ho Chi Minh City



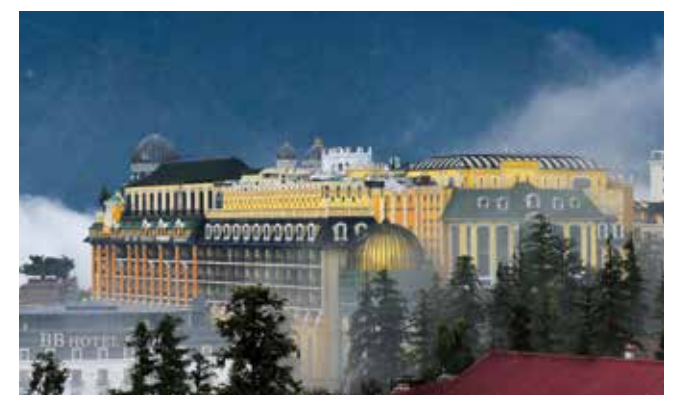
Geleximco Tower
No 36 Hoang Cau, Dong Da Dist, Hanoi



CII Tower
No 152 Dien Bien Phu, Binh Thanh, Ho Chi Minh City



Grand Tourane Hotel
Phuoc My, Son Tra, Danang



Hôtel de la Coupole - MGallery by Sofitel,
No 1 Hoang Lien Street, Sa Pa, Lao Cai



Mövenpick Resort Cam Ranh, Khanh Hoa Province



Radisson Blu Resort Cam Ranh, Khanh Hoa Province



Nghia Do new urban area
Cau Giay district, Hanoi



Vicentra center
Vinh city, Nghe An



Thao Dien Pearl
District 2, Ho Chi Minh City



Vincom Mega Mall Royal City
Thanh Xuan Dist, Hanoi



Eurowindow River Park
Dong Hoi Commune, Ha Noi



Eurowindow Garden City
Thanh Hoa Province



Empire City Thu Thiem
District 2, Ho Chi Minh City



Sun Grand City Ancora Residence
03 Luong Yen, Bach Dang, Hai Ba Trung District, Hanoi



Melinh Plaza Yen Bai
826 Dien Bien, Minh Tan, Yen Bai City



Eurowindow Green Park
Yen Ninh, Yen Bai City



Mipec Riverside
Long Bien, Hanoi



Danang Golden Bay, Le Van Duyet, Nai Hien Dong Ward,
Son Tra District, Da Nang



Eurowindow Twin Parks urban area
Gia Lam, Hanoi



Artemis Tower
Le Trong Tan Str, Hanoi



Ha Do Centrosa
Road 3/2, District 10, Ho Chi Minh City



Dreamland Bonanza
23 Duy Tan, My Dinh, Cau Giay District, Hanoi



The Zei Luxury Apartments
No 8 Le Duc Tho, My Dinh, Tu Liem, Hanoi



Hanoi Signature
No 6 Nguyen Van Huyen, Nghia Do, Cau Giay, Hanoi



My Dinhnh Pearl Apartments
No 1 Chau Van Liem, Me Tri, Tu Liem, Hanoi



Gold Mark City
136 Ho Tung Mau, My Dinh, Tu Liem, Hanoi



Viglacera Tower, Thang Long Number 1,
No.1 Thang Long Avenue, Hanoi



Sun Grand City
69B Thuy Khue, Hanoi



6th Element
Tay Ho, Hanoi



Vinaphone
69 Hoang Quoc Viet, Nghia Do, Cau Giay, Hanoi



Home City
177 Trung Kinh, Cau Giay, Hanoi



Techno Park
Da Ton, Gia Lam, Hanoi



Tay Ho Residence
68A Vo Chi Cong, Xuan La, Tay Ho, Hanoi



Sun Grand City
69B Thuy Khue, Tay Ho, Hanoi



Thanh Binh Business Tower
Mo Lao, Ha Dong, Hanoi



Emerald Apartments
My Dinh, Tu Liem, Hanoi



King Place
108 Nguyen Trai, Thanh Xuan, Hanoi



Sunshine Golden River
Ciputra Tay Ho, Hanoi



Sales Gallery Van Phuc Group
617-621 Dien Bien Phu, Binh Thanh, Ho Chi Minh City



Khai Son Hill Long Bien
Long Bien, Hanoi



Villas at Quang Nam, Da Nang



Villas at Binh Duong, Ho Chi Minh City



Phu Quoc Marina Square
Phu Quoc, Kien Giang



Sala Apartments
Thu Thiem, Thu Duc, Ho Chi Minh City



Villas Vinhomes
Gia Lam, Hanoi



Villas Athena Fullland Dai Kim
Nguyen Xien, Thanh Xuan, Hanoi



Sailing Club Villas Phu Quoc
Phu Quoc, Kien Giang



Pullman Phu Quoc
Phu Quoc, Kien Giang



Villas Decoimex
Vung Tau City



Villas at Gia Lam, Hanoi



Sun Tropical Village
Phu Quoc, Kien Giang



Kien Hung Apartments
Ha Dong, Hanoi



Villas Vinhomes Riverside
Long Bien, Hanoi



Villas at Ly Nhan Tong, Da Nang



Villas at Vinhomes Riverside
Long Bien Dist, Hanoi



Villa on Pham Van Dong Street, Da Nang



Villa in Duong Noi, Ha Dong, Hanoi



Villa in project Gamuda Gardens, Hanoi



Villas at Splendora City
An Khanh, Hoai Duc, Ha Noi



Villa at Ciputra Villas
Hanoi



19 C1 Ciputra Villa, Ha Noi



Block 1 – 2 – 3 – 4, Hung Vuong Residential District,
Phu Thuy Ward, Phan Thiet City, Binh Thuan Province



Villas at No 219 Dao Duy Tu, Vung Tau City



Villas at Van Phuc, Binh Thanh, Ho Chi Minh City



Villas at Van Phuc, Binh Thanh, Ho Chi Minh City



No 11 Villa, Le Van Mien Street, Da Nang



H14 Villa, Thu Thiem, Dong Van Cong large road,
Thanh My Loi Ward., Dist 2, Ho Chi Minh City



E7 Villa
No 05 ward, Thu Thiem, Dist 2, Ho Chi Minh City



Villas at Van Phuc, Binh Thanh, Ho Chi Minh City



Villas at Tam Dao, Vinh Phuc



Villas Eurowindow Twin Parks
at Gia Lam, Hanoi



Villas Eurowindow Twin Parks
at Gia Lam, Hanoi



Villas at Vo Thi Sau street, Vung Tau City



Villas at Minh Khai, Hanoi



Villas at Thai Binh City



An Hung Park City, Ha Dong Dist, Ha Noi



Villas at Vien Co Cham Resettlement Area, No 11 Villa,
Le Van Mien Street, Da Nang



Him Lam Project, Tan Hung Ward,
District 7, Ho Chi Minh City



Villas at Vung Tau City



Villas at Ly Nhan Tong street, Da Nang



Villas at 219 Dao Duy Tu,
Vung Tau City



Villas No. 7, Tan Phu District,
Binh Chanh Dist. HCM



Villas at Tan Uyen, Binh Duong



Villas at Tan Uyen, Binh Duong

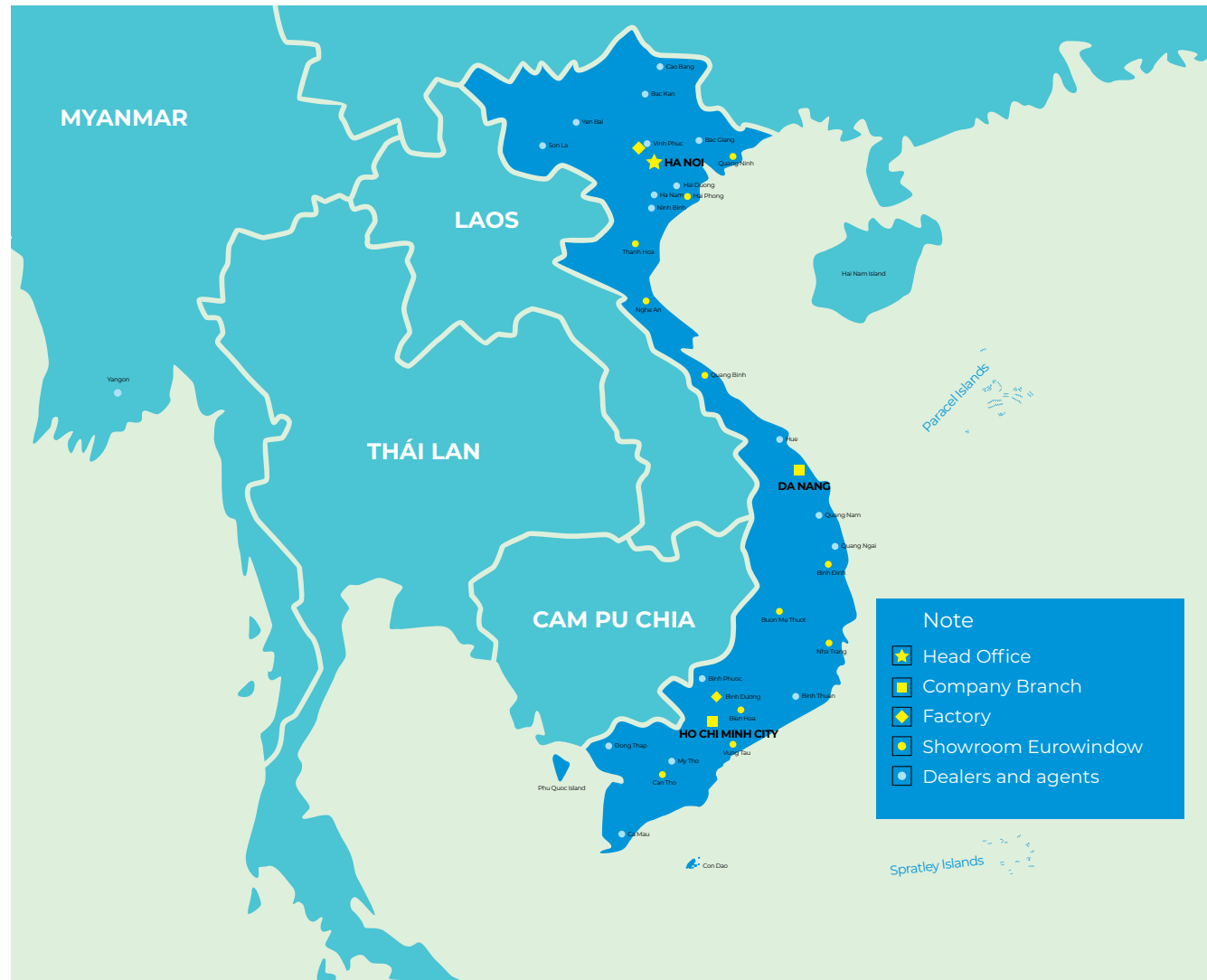


Villas at Tran Quang Khai Road,
Dalat City



Villas at Xuann An,
Phan Thiet City, Binh Thuan

DISTRIBUTION MAP



Eurowindow, with a commitment to showcasing the superior qualities of its products, has continually expanded its network of showrooms, distributors, and sales offices across Vietnam. The company officially opened its Representative Office and Showroom in Yangon, Myanmar

in 2018, further extending its reach internationally. Eurowindow is dedicated to providing customers with comprehensive services, from consultation, measuring, and design to production, installation, finishing, and warranty.

Eurowindow offers a diverse range of products in various designs and specifications, which are outlined on the legal basis for each quotation. The products presented in this catalog are for representation purposes only.

Copyright 2003 - 2024 by Eurowindow Joint Stock Company. All content and images in this catalog are created and photographed by Eurowindow, featuring products and projects utilizing Eurowindow products. Any reproduction requires written consent from Eurowindow.

EUROWINDOW SHOWROOM NETWORK

IN HANOI CITY

Showroom Ton That Tung
02 Ton That Tung - Dong Da District.
Tel: (84 - 24) 3 7 47 47 77. Fax: (84 - 24) 3 7 47 47 28
Email: Showroom.lnd@eurowindow.biz

Showroom Eurowindow Multi Complex
1st & 4th Floor, Eurowindow Multi Complex Building,
No. 27 Tran Duy Hung, Cau Giay District
Tel: (84 - 24) 3525 1288 / 3525 1286
Email: Showroom.tdh@eurowindow.biz

Showroom Lang Ha
1st, 2nd floor, Thanh Cong Building, 57 Lang Ha, Ba Dinh.
Tel: (84-24) 512 1415 / 512 1416
Email: Showroom.lh@eurowindow.biz

Showroom Me Linh
Melinh PLAZA Shopping Center, Km 8,
Thang Long - Noi Bai Expressway
Tel: (84 - 24) 3525 1288 / 3525 1286
Email: Showroom.ml@eurowindow.biz

Showroom Vo Chi Cong
No. 96 Vo Chi Cong, Tay Ho District.
Tel: (84 - 24) 3 791 3838 / 3 791 6349
Email: Showroom.vcc@eurowindow.biz

Showroom Ha Dong
1st floor, Melinh PLAZA Ha Dong, To Hieu, Ha Dong.
Tel: (84 - 24) 3 311 7700. Fax: (84 - 24) 3 311 7737
Email: Showroom.hd@eurowindow.biz

IN HAI PHONG CITY
463 Vo Nguyen Giap Street, Le Chan District.
Tel: (84-225) 3 956 111. Fax: (84-225) 3 956 000
Email: Showroom.hp@eurowindow.biz

IN QUANG NINH
Apartment A6-14, Monbay Urban Area, Hong Hai Ward,
Ha Long City, Quang Ninh
Tel: (84-203) 3 55 6669. Fax: (84-203) 3 55 6799
Email: Showroom.qn@eurowindow.biz

IN THANH HOA
Unit SH17, Hoa Chau Street, Eurowindow Garden
City, Dong Hai Ward, Thanh Hoa City.
Tel: (84 - 237) 3964 961. Fax: (84 - 237) 3 964 963
Email: Showroom.th@eurowindow.biz

IN NGHE AN

Unit 15, Vicentra Mall, No 2, Quang Trung Street,
Vinh City.
Tel: (84 - 238) 3 588 808. Fax: (84 - 238) 3 588 809
Email: Showroom.vinh@eurowindow.biz

IN QUANG BINH
No 13A Tran Hung Dao, Dong Hoi City
Tel: 0906 000 111
Email: Showroom.qb@eurowindow.biz

IN DA NANG CITY
152 Phan Dang Luu, Hoa Cuong Bac Ward, Hai Chau
District, Da Nang City
Tel: 0906 000 111
Email: cn-dn@eurowindow.biz

IN BINH DINH
Lot no.5, Shopshouse Area, Dai Phu Gia Residential
Area, Quy Nhon City.
Tel: 0906 000 111
Email: showroom.quynhon@eurowindow.biz

IN BUON MA THUOT
42 Phan Chu Trinh, Thang Loi ward.
Tel: (84 - 262) 393 61 61. Fax: (84 - 262) 393 61 61
Email: Showroom.bmt@eurowindow.biz

IN NHA TRANG CITY
146 Le Hong Phong, Phuoc Hai Ward.
Tel: (84 - 258) 6 250 289. Fax: (84 - 258) 6 250 290
Email: showroom.nt@eurowindow.biz

IN HO CHI MINH CITY
Showroom Mac Dinh Chi
39 Bis Mac Dinh Chi, Dakao Ward, District 1.
Tel: (84 - 28) 6278 8124. Fax: (84 - 28) 3 824 8224
Email: Showroom.mdc@eurowindow.biz

Showroom Phu My Hung
35 My Hung Ward, Nguyen Van Linh, Tan Phong
Ward, District 7.
Tel: (84 - 28) 5412 3498. Fax: (84 - 28) 5412 3497
Email: showroom.pmh@eurowindow.biz

Showroom To Hien Thanh
225 - To Hien Thanh, Ward 13, District 10.
Tel: (84 - 28) 3863 2609. Fax: (84 - 28) 3868 0800
Email: showroom.tht@eurowindow.biz

Showroom Phan Van Tri

Unit 15, Vicentra Mall, No 2, Quang Trung Street,
Vinh City.
Tel: (84 - 28) 3636 7797. Fax: (84 - 28) 3636 77 98
Email: sr-phanvantri@eurowindow.biz

Showroom Dong Sai Gon
109 Lien Phuong, Phuoc Long B Ward, Thu Duc City
Tel: (84-28) 7 302 7366. Fax: (84-28) 7 302 7366
Email: sr-dongsaigon@eurowindow.biz

Showroom Pham Van Dong
1218 Pham Van Dong, Linh Tay Ward, Thu Duc City
Tel: (84 - 28) 2200 5586
Email: sr-phamvandong@eurowindow.biz

IN BINH DUONG
454 Binh Duong Boulevard, Hiep Thanh Ward, Thu
Dau Mot City.
Tel: (84 - 274) 3 872 714. Fax: (84 - 274) 3 872 713
Email: showroom.bd@eurowindow.biz

IN DONG NAI
931 Pham Van Thuan, Tam Hiep Ward, Bien Hoa City
Tel: (84 - 251) 882 2595. Fax: (84 - 251) 882 2597
Email: showroom.bh@eurowindow.biz

IN VUNG TAU
112 Huyen Tran Cong Chua, 8 Word, Vung Tau City
Tel: (84 - 254) 6 255 145. Fax: (84 - 254) 6 255 146
Email: showroom.vt@eurowindow.biz

IN CAN THO CITY
297 30/4 Street, Xuan Khanh Ward, Ninh Kieu District.
Tel: (84 - 292) 6 250 679. Fax: (84 - 292) 6 250 680
Email: showroom.ct@eurowindow.biz

IN YANGON (MYANMAR)
No. 275 Yaza Thin Gyan 7th street, Ward 11, South
Okkalapa, Township, Yangon, Myanmar (corner of
Wai Zan Tar Rd & Yadanar Rd).
Tel: +95 (0) 157 0600.
Email: ew.myanmar@eurowindow.biz

EUROWINDOW REPRESENTATIVE OFFICES / POS NETWORK

OFFICE IN HUE
Lô SH19, KĐT The Manor Crown, phường Xuân phú,
Thành phố Huế.
Mobile: 0988 789 614

OFFICE IN QUANG TRI
146 Highway 9 Ward 1, Dong Ha City, Quang Tri.
Mobile: 0984 775 606

OFFICE IN QUANG NAM
No 206, Tran Quy Cap Street,
Hoa Thuan Ward, Tam Ky City.
Mobile: 0988 789 698

OFFICE IN QUANG NGAI
No 185A, Nguyen Tu Tan Street,
Tran Phu Ward, Quang Ngai City.
Mobile: 0909 096 980

OFFICE IN TUY HOA
122-124 Hung Vuong Avenue, Ward 6, Tuy Hoa City,
Phu Yen.
Mobile: 84-257) 2 482 379

OFFICE IN MY THO
No. 426, Nguyen Thi Thap Street, Ward 6, My Tho City,
Tien Giang
Tel: (84 - 273) 3 751 068

OFFICE IN THU DUC CITY
22 An Phu, An Phu Ward, District 2, Ho Chi Minh City
Tel: 0903 11 8888

OFFICE IN BINH PHUOC
No 455, Phu Rieng Do Street, Tan Binh District,
Dong Xoai City, Binh Phuoc.
Mobile: 0988 77 5668

OFFICE IN CA MAU
No 90K, Nguyen Trai Street, Sub- village 2,
Ward 9, Ca Mau City.
Mobile: 0949 525 369
Email: sr-camau@eurowindow.biz

Check Eurowindow Website for details





-  Head office: Eurowindow Office Building,
No 2 Ton That Tung Street, Dong Da District, Hanoi City
-  Northern Region: **0909 888 000**
Central Region: **0906 000 111**
Southern Region: **0903 11 8888**
-  www.eurowindow.biz

Facebook

